



Environment and Health

Global/local challenges and actions



EDITORS:

Elif Tural, PhD,
Patricia Ortega-Andeane, PhD,
Deni Ruggeri, Ph.D.

ASSOCIATE EDITORS:

Sharmin Kader, PhD
Lindsay McCunn, PhD
Octavio Salvador-Ginez, PhD
Cristina Vanegas-Rico, PhD
Mireya Gómez Nava
Ankita Karmakar

edra 54
Mexico City, UNAM

CONFERENCE PROCEEDINGS

54th Annual Conference of
The Environmental Design Research Association



EDRA 53 Program Committee

Elif Tural, Ph.D.
 Mimi Majumdar Narayan, Ph.D.
 Lorraine E. Maxwell, Ph.D.
 Sharmin Kader, Ph.D.
 Deni Ruggeri, Ph.D. -- EDRA Executive Director
 Whitney Juneau -- EDRA Assistant Executive Director

EDRA53 Local Committee

Patricia Ortega-Andeane, Ph.D.	Jose Antonio Campos, Ph.D.
Javier Urbina-Soria, Ph.D.	Laura Sanchez, Ph.D.
Cristina Vanegas, Ph.D.	Isalas Lara, Ph.D.
Cesareo Estrada, Ph.D.	Carlos Adrian Cruz, M. Sc.
Octavio Salvador, Ph.D.	Elizabeth Lopez, Ph.D.
Mireya Gómez Nava, Ph.D.	Karina Laderos, Ph.D.
Marco Bustos, Ph.D.	

EDRA Board of Directors

Lindsay McCunn, Ph.D.	<i>Board Member</i>
-- <i>Chair</i>	Hui Cai, Ph.D. -- <i>Board Member</i>
Elif Tural, Ph.D. -- <i>Chair-Elect</i>	Alexandre H. Champagne -- <i>Board Member & Student Representative</i>
Sharmin Kader, Ph.D. -- <i>Past-Chair</i>	Julie Stevens, MLA -- <i>Board Member</i>
Shauna Mallory-Hill, Ph.D. -- <i>Board Member, Secretary</i>	Lorraine E. Maxwell, Ph.D. -- <i>Emeritus Board Member, Ex-Officio</i>
Lisa Lim, Ph.D. -- <i>Treasurer</i>	Deni Ruggeri, Ph.D. -- <i>Executive Director</i>
Debarati 'Mimi' Majumdar Narayan, Ph.D. -- <i>Board Member</i>	
Mallika Bose, Ph.D. --	

EDRA Organizational Members**Non-profit/Institutional**

Boston Architectural College	University of Kansas
University at Buffalo - School of Architecture and Planning	University of Utah College of Architecture + Planning
University of Colorado Boulder Program in Environmental Design	Kuwait University
Cornell University - Human Centered Design	University of Maryland, College Park - Plant Science and Landscape Architecture
University of Detroit, Mercy - School of Architecture	Michigan State University
University of Illinois, Urbana-Champaign - Landscape Architecture	Rutgers University - Center for Green Building
	Texas Tech University - College of Architecture
	University of Utah College of Architecture + Planning

EDRA Corporate Members

CANNONDESIGN
 DLR Group
 HGA Architects and Engineers

HKS, Inc.
 SMITHGROUP
 PAGE
 CORGAN
 LAKE FLATO Architects

EDRA Lifetime Members

Mohamad Araji	Esperanza C. Harper
Meredith Banasiak	Vibhavari Jani
John Barbour	Lisa Lim
Mallika Bose	Maria Papiez
Susan Drucker	David R. Seamon
Kelleann Foster	Nicholas Wise
Peter Haratonik	Julie Zook

EDRA Wayfinders

Cherif Amor
 Tatiana Berger
 B. (Bonnie) Sanborn
 Daniel Stokols

EDRA Placemakers

Gowri Betrabet Gulwadi
 Lynn Paxson

EDRA Emeriti

Thierry Rosenheck	David Stea
Chris Burda	Peter R. Hecht
Sue Weidemann	Satoshi Kose P
Anne Lusk	Muriel Beattie
D. Michael Murtha	Sanjoy Mazumdar
Ann S. Devlin	Sherry Ahrentzen
Zena O'Connor	Robert W. Marans
Karen Tinker-Walker	Gary Gumpert
Henry Sanoff	

EDRA Partner Organizations

International Association of People-Environment Studies
 Urban Communication Foundation
 Project for Public Spaces

EDRA 53 Sponsors

Hacienda CDC	ARCADIS
(Community Development Corporation)	Page
Cornell University	HKS
	Millerknoll

EDRA Social Media

www.facebook.com/edra.org
 @edratweets
 @edra_environments
 www.linkedin.com/company/environmental-design-research-association

Copyright © 2024, The Environmental Research Design Association (EDRA)

PO Box 43023 Washington, D.C., 20010, USA

Web: www.edra.org

Email: proceedings@edra.org

ISBN 979-8-9855428-3-7

All rights reserved. No part of this book covered by copyright herein may be reproduced or transmitted in any form or by any means — graphic, photocopy, recording, taping, or digital — without the written permission of the publisher



EDRA54 Sponsor



Graduate Student Mentoring Workshop Sponsor



GPA & CORE Luncheon Sponsor



Keynote Speech Sponsor

Graduate Student Mentoring Workshop Sponsor



Poster Session Sponsor



EDRA Social Media



www.facebook.com/edra.org



[@edratweets](https://twitter.com/edratweets)



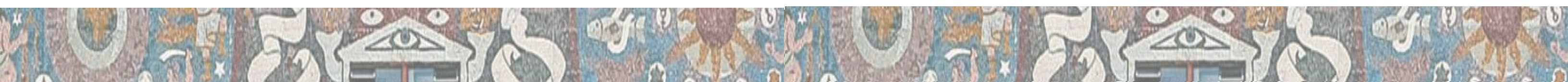
[@edra_environments](https://www.instagram.com/edra_environments)



www.linkedin.com/company/environmental-design-research-association

Table of Contents

EDRA 54 Proceedings	8
Conference Tracks	13
Keynote Address & Plenary Sessions	15
Keynote Speakers	16
Psychological Health & Well-Being: Challenges and Actions for Livable Environments	18
Challenges and Actions for a Sustainable Future: Housing, Public Spaces, and Design Technologies	22
Mobile Sessions	25
Ancient Settlements of Aztec Empire: El Templo Mayor	26
Mexican Muralism at the Unam: Cultural Heritage of Humanity	27
Green Infrastructure as an Instrument for Planning and Socio-Environmental Design in Mexico City	28
Awards & Recognitions	29
Great Places Awards	30
Paper and Poster Awards	42
Michael Brill Grant for Communication, Design & Human Behavior	43
2023 EDRA CAREER AWARD	44
2023 EDRA ORGANIZATION AWARD	45
CORE Awards	47
Graduate Student Mentoring Workshop	49
Refereed Full Papers	61
Tigard Air Quality and Urban Ecological Design Study:	62
Fine-Grained Measurement of Particulate Matter Comparisons across the "In-Between" Scales of Space and Time	62
Investigating Correlations between the Use of Visual Social Media, Urban Green Space, and Subjective Well-Being: A Case Study in China	74
Determining the Thermal Resistance of Three-Dimensional Printed Concrete Blocks Through CAD and CAM Processes	91
Context as Content: Architecture of Social Learning in the Metaverse	98
A Preliminary Study on the Use of the Yunlin River Trail by Middle-Aged and Elderly	104
Proposal of Taxonomy and a Digital Catalogue of Pro-Environmental Actions for the Planet	112
Review of Street Space Design from a Humanistic Perspective	128
Safeguarding Health and Well-Being in University Classrooms: Estimating CO2 Concentration Based on Air Permeability	142
Conducting Field Validations of Commercial Energy Efficiency Technologies With Underserved Communities	151
Developing Inclusive Design Standards (UK) Enabling Future Home Adaptations To Support People With Dementia	169
Environmental Quality and Local Problems: Neighborhood and City Through the Years	181
University Student's Visual Preferences Regarding Urban Landscape	187



Equitable Renewal: Reclamation + Repair	200
The Biophilic School: A Toolkit of Biophilic Interventions for Existing Schools to Enhance Occupant Outcomes	209
Pandemical Healthcare Architecture, Social Responsibility, and Health Equity	219
Building-Ema: Applying Ecological Momentary Assessment to Post-occupancy Evaluation	232
Pondering the Spatial Pattern of Declining — A Study on the Commercial Stability of Qianmen Area in Beijing	242
Ovarian Cancer Patient Preferences In the Gynecologic Oncology Clinic Waiting Room During the COVID-19 Pandemic	251
Understanding Spatial Perception via Virtual Reality and Interaction Geography	266
Scale on Subjective Well-Being, Quality of Life, and Community Identity, in the Pueblos Mágicos Program	278
The Impact of Residential Self-Selection on Social Cohesion in the Hanina District of Jordan	294
Natural Ventilation in Beijing Courtyard Primary Room: A Comparison of Isolated and Non-Isolated Buildings	312

Abstracts: Individual Presentations 323

TRACK 1: Stress and restoration in work and health places	324
TRACK 2: Solving needs and neighborhoods	328
TRACK 3: Social and Environmental Problems in Latin America	333
TRACK 4: Quality of life and social justice	338
TRACK 5: Pandemics and Community Health	342
TRACK 6: Environmental Studies on Children populatio	346
TRACK 7 : Designs for Aging	350
TRACK 8: Design analysis and theoretical aspects	355
TRACK 9: Community challenges and climate change	359
TRACK 10: Augmented Reality	363
TRACK 11: Architecture and Design Pedagogy	367
TRACK 12: Alternative Materials & Housing Design	372
TRACK 13: Access, abilities and healing environments	376
TRACK 14: Design lessons	381
TRACK 15: Design of spaces for elderly people	385
TRACK 16: Design Spaces importance in Pandemic	389
TRACK 17: Eco-technologies and water issues	394
TRACK 18: Food-sharing and Healthy lifestyle	398
TRACK 19: Green resources management	402
TRACK 20: Sensory Effects in Different Places	406
TRACK 21: Social change for underrepresented groups	410
TRACK 22: Social Communities in Neighbourhoods	414
TRACK 23: Urban Neighbourhoods	419
TRACK 24: Urban public space and resilience	423
TRACK 25: Use of Space in Higher Education Campus	427
TRACK 26: Virtual Reality	432
TRACK 27: COVID-19: Restoration and resilience studies	436
TRACK 28: Dementia	440
TRACK 29: Design, inequity and minority groups solutions	444
TRACK 30: Educational environments	447
TRACK 31: Environment and Virtual Reality	451
TRACK 32: Healing Spaces	454
TRACK 33: Special needs for design: young and family users	458
TRACK 34: The role of design in physical and mental health	463
TRACK 35: Walkability and accessibility	467
TRACK 36 : Work Environments	470
TRACK 37 : Violence and Problems in Isolated Environments	474

TRACK 38 : Use of space & Urbanism	478
TRACK 39 : Urban biodiversity and landscape	482
TRACK 40: Simulation as Assessment	486
TRACK 41 : Influence of environments conditions in behavior	489
TRACK 42 : Housing Design	493
TRACK 43 : Higher Education Research	497
TRACK 44 : High resolution mapping: technology and space	500
TRACK 45 : Heritage, creativity and culture	503
TRACK 46 : Healthy environments	507
TRACK 47 : Green and restorative environments	511
TRACK 48 : Experiences of Nature	515
TRACK 49 : Designing Mobility	519
TRACK 50 : Design student places	523
TRACK 51 : Design impacts on environmental outcomes	527
TRACK 52 : Age-Friendly Communities	532
TRACK 53 : Healthcare Spaces	536
TRACK 54 : POE and Institutional environments	541
TRACK 55 : Resource Management	544
TRACK 56 : Social inclusion and justice	548
TRACK 57 : Social meeting places	551
TRACK 58 : Theoretical aspects of design	555

Abstracts: Collaborations 561

Abstracts: Workshops 567

Abstracts: Intensives 579

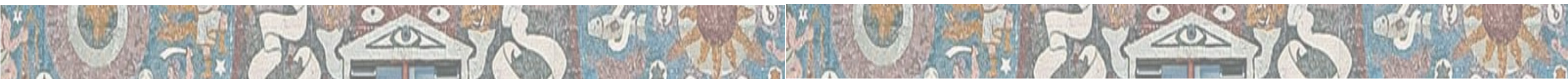
Abstracts: Symposia 599

Abstracts: Digital Media Shorts 631

Abstracts: Posters 637

Appendix A: Posters 689

Acknowledgments 741



The Emotional Atmospheres ATLAS: A Database of Architectural Experiences Surveyed through Arousal and Valence

Presenting Author: Elisabetta Canepa (Kansas State University)

Author: Kutay Guler (Kansas State University)

Robert Condia (Kansas State University)

Spatial experiences in humans are afforded and altered by architecture. How we perceive our environments affects our behavior, well-being, and health. This is well known. However, as designers, we must consolidate evidence. Architecture now cooperates with neuroscience in studying how we experience spaces. Design expertise might advance into a different dimension, shifting the focus from buildings' technical performances to people's experiences and emotions.

We refer to our surroundings' emotional charge as "atmosphere." From a methodological perspective, the interpretation of atmospheres has been dominated by a phenomenological approach grounded in observing spatial experiences as consciously felt in first-person. Nowadays, there is an increased emphasis on unconscious responses, examinable through third-person assessments. The challenge is to link a growing understanding of architectural atmospheres to studying the body, brain, and emotion-related mechanisms to decipher people's emotional complexity.

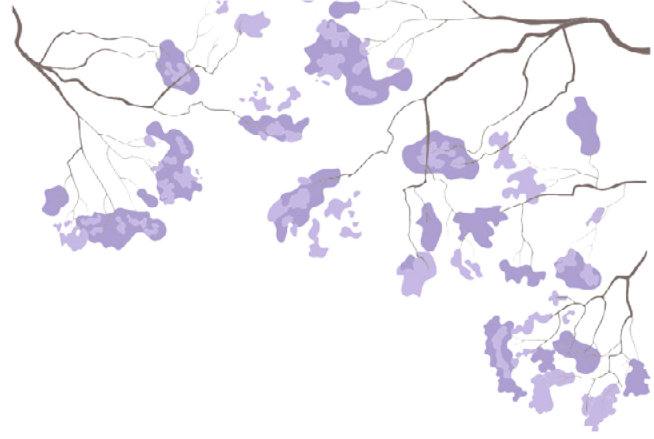
In designing (neuro)physiological signal-based protocols aimed at detecting and measuring atmospheric emotions, we need normative affect-based stimuli specifically conceived to analyze architectural settings. The reference is the International Affective Picture System (IAPS), a set of photos validated as consistently eliciting a precise emotional response (self-rated upon arousal, valence, and dominance). Within the interdisciplinary field of neuroarchitecture, similar databases are rare, and methodologies differ. We crafted ATLAS, a dATabase of visual Atmospheric Stimuli: namely, a series of spatial patterns born from a systematic selection of atmosphere generators. Generators of atmosphere are architectural features designed to afford atmospheric effects (e.g., lights, colors, materials, and proportions).

A workshop of 5th-year students trained in Atmospheric Design produced 65 case studies (corridors), grown from a shared baseline and altered according to 13 generators. Atmosphere is a complex process. Yet a scientifically controllable experimental paradigm imposes a reductionist approach, suggesting work on one design factor at a time to ensure a correlation between stimulus and response.

As experts, we rated the spaces in terms of arousal and valence (the two dimensions of core affect). Through an online survey, we then tested our hypotheses. We simulated dynamic engagement with space by editing 12-second videos of first-person-view trajectories. This study verified the methodology of another video dataset. Our stimuli are more consistent and comparable. They offer an architectural quality adaptable to the design practice, minimizing semantic information. We dimensioned our 3D environments to use them in virtual reality protocols, incorporating wireless gear, eye-tracking technology, and physiological sensors. The validation process will move on to this stage.

ATLAS is a unique open-access tool that supports researchers interested in exploring emotional reactions to architectural features by providing reliable, standardized, and reproducible stimuli. Experiment-based investigations need this database to advance research questions and methodologies.

This abstract was developed within the RESONANCES project (ArchitecturalAtmospheres: The Emotional Impact of Ambiances Measured through Conscious, Bodily, and Neural Responses), which received funding from the European Union's Horizon 2020 research and innovation program under the Marie Skłodowska-Curie grant agreement 101025132. The content reflects only the authors' view. The European Research Executive Agency is not responsible for any use that may be made of the information it contains.



www.edra.org
The Environmental Research Design Association (EDRA)
PO Box 43023 Washington, D.C. 20010, USA
headquarters@edra.org
+1 (507) 339-4620

Environment and Health

Global/local challenges and actions

