

Elsevier Editorial System(tm) for
Geomorphology
Manuscript Draft

Manuscript Number:

Title: The Bisagno stream catchment (Genoa, Italy) and its major floods (1822, 1970 and 2014): geomorphic and land use variations in the last three centuries

Article Type: Research Paper

Keywords: Bisagno stream; Geo-hydrological hazard; Historical floods; Land-Use variations

Corresponding Author: Dr. Francesco Faccini,

Corresponding Author's Institution: University of Genoa

First Author: Francesco Faccini

Order of Authors: Francesco Faccini; Guido Paliaga, PhD; Pietro Piana, PhD; Alessandro Sacchini, PhD; Charles Watkins, prof.

Abstract: The city of Genoa (Liguria, Italy) and the Bisagno Valley are affected by frequent floods, often with loss of human lives. Historically characterised by high flood hazard, the Bisagno Valley was recently affected by a flood event on 9th October 2014, less than three years after the tragic event of 4th November 2011 when six people died, including two children. In the last 50 years four destructive floods occurred in the Bisagno Valley, in addition to some minor events which caused significant damage and economic losses.

This paper examines the three largest flood events in terms of intensity and ground effects which affected the Bisagno Valley in the last three centuries: the flood of 25th October 1822, well documented by contemporary sources, the flood of 8th October 1970, undoubtedly the most tragic on record and the very recent event of 9th October 2014. For this purpose both scientific and historical-geographic methodologies were adopted, the latter particularly useful for the reconstruction of the flood event of 1822 and the landscape history of the Bisagno Valley in the 19th century.

This comparison shows that the Bisagno Valley is characterised by climatic and landform features which have been making the flood events historically common in the area. However, both recent climate change and land-use variations, including some irrational modifications of the catchment basin, have progressively determined an increase of flood hazard. Consequently, in recent decades a growth in the number of flood events occurred, to the extent that the Bisagno today is a famous case study on an international scale.

Suggested Reviewers: Jerome V. DeGraff Prof
Adjunct Professor, Department of Earth and Environmental Sciences ,
California State University, Fresno
jdegtraff@csufresno.edu
<http://www.fresnostate.edu/csm/ees/faculty-staff/degtraff.html>

De Jong Carmen Prof

Mountain Centre, Université Savoie Mont Blanc
dejong.carmen@neuf.fr
<http://www.carmendejong.org/>

Mauro Soldati Prof
Dipartimento di Scienze Chimiche e Geologiche , Università di Modena e
Reggio Emilia
Mauro.soldati@unimore.it
<https://personale.unimore.it/rubrica/dettaglio/soldati>

Mike Smith Prof
Natural & Built Environments, Kingston University London
Michael.Smith@kingston.ac.uk
http://sec.kingston.ac.uk/about-SEC/people/academic/view_profile.php?id=44

Timea Kiss Prof
Department of Physical Geography and Geoinformatics, University of
Szeged, Hungary
kisstim@geo.u-szeged.hu
<http://www.geo.u-szeged.hu/dr-kiss-timea>

Jim Griffiths Prof
Centre for Research in Earth Sciences, Plymouth University
jim.griffiths@plymouth.ac.uk
<https://www.plymouth.ac.uk/staff/jim-griffiths>

Paolo Tarolli Prof
TESAF, University of Padova
paolo.tarolli@unipd.it
<http://www.tesaf.unipd.it/category/ruoli/personale-docente?key=CF8B9A11F643DBC58DFB3E40C3CEE8B4>

<http://dx.doi.org/10.1016/j.geomorph.2016.07.037>

1 **The Bisagno stream catchment (Genoa, Italy) and its major**
2 **floods (1822, 1970 and 2014): geomorphic and land use variations**
3 **in the last three centuries**

4
5
6 Francesco Faccini^{1*}, Guido Paliaga¹, Pietro Piana², Alessandro Sacchini¹, Charles Watkins²

7
8
9 ⁽¹⁾ School of Mathematical, Physical and Natural Sciences, University of Genoa, Corso Europa, 26, 16132
10 Genoa, Italy. E-mail: faccini@unige.it

11 ⁽²⁾ School of Geography, University of Nottingham, Sir Clive Granger Building, University Park, Nottingham
12 NG7 2RD. E-mail: charles.watkins@nottingham.ac.uk

13
14 *Corresponding author e mail: faccini@unige.it
15
16

17 **Abstract**

18
19 The city of Genoa (Liguria, Italy) and the Bisagno Valley are affected by frequent floods,
20 often with loss of human lives. Historically characterised by high flood hazard, the Bisagno
21 Valley was recently affected by a flood event on 9th October 2014, less than three years after
22 the tragic event of 4th November 2011 when six people died, including two children. In the
23 last 50 years four destructive floods occurred in the Bisagno Valley, in addition to some
24 minor events which caused significant damage and economic losses.

25 This paper examines the three largest flood events in terms of intensity and ground effects
26 which affected the Bisagno Valley in the last three centuries: the flood of 25th October 1822,
27 well documented by contemporary sources, the flood of 8th October 1970, undoubtedly the
28 most tragic on record and the very recent event of 9th October 2014. For this purpose both
29 scientific and historical-geographic methodologies were adopted, the latter particularly useful

30 for the reconstruction of the flood event of 1822 and the landscape history of the Bisagno
31 Valley in the 19th century.

32 This comparison shows that the Bisagno Valley is characterised by climatic and landform
33 features which have been making the flood events historically common in the area. However,
34 both recent climate change and land-use variations, including some irrational modifications of
35 the catchment basin, have progressively determined an increase of flood hazard.
36 Consequently, in recent decades a growth in the number of flood events occurred, to the
37 extent that the Bisagno today is a famous case study on an international scale.

38

39 **KEY-WORDS:** Bisagno stream, Genoa, Geo-hydrological Hazard, Historical floods, Land-Use
40 variations

41 **1. Introduction**

42

43 Research on urban floods is today a particularly relevant theme for the analysis of the hazard
44 (Plate, 2002) and its management (Apel et al., 2008) aimed to reduce geo-hydrological risk.
45 More recently this approach is directed to the increase of resilience amongst local
46 communities (Committee on Increasing National Resilience to Hazards and Disasters, 2012;
47 Fryirs et al., 2015). Some scholars stress the role that climate change has in influencing the
48 flood hazard (Barrera-Escoda and Llasat, 2015), while others underline the influence of
49 climate oscillation to explain historical floods in Asia and Europe (Yu et al., 2009; Likai and
50 Jijun, 2010; Bohm et. al., 2014; Elleder, 2015). Landscape evolution is another important
51 factor to consider when studying flood hazard, particularly land-use change (Latocha, 2009;
52 Agnoletti et al., 2012; Boudou et al., 2016) or combined climate and land-use variations
53 (Ward et al., 2009).

54 Important flood events have recently affected Central Europe (Grams et al., 2014) and
55 research on flooding regime variations and comparisons with past events has been carried out
56 (Blösch et al., 2013; Hall et al., 2014). In Southern European countries flood hazard is
57 particularly high along the Mediterranean coast (Montanari et al., 2013; Jansà et al., 2014)
58 and so the flash flood stream power (Marchi et al., 2016). In the last decades, flash floods in
59 Southern Europe, Italy in particular, have been studied due to their remarkable intensification
60 and the increase of rainfall intensity connected with recent climate change (Terranova and
61 Cariano, 2014; Llasat et. al., 2014). Due to geologic, geomorphologic and climatic features,
62 geo-hydrological hazard is here particularly common and its primary effects include serious

63 damage to buildings, infrastructures and loss of life (Guzzetti and Tonelli, 2004; Luino,
64 2005).

65 In the Italian peninsula, the city of Genoa has been historically affected by geo-hydrological
66 events since the Roman-Byzantine period, while important events historically documented in
67 the annals of the Republic of Genoa occurred in 1404, 1407, 1414, 1416, 1420, 1452, 1465,
68 1582, 1746, 1780, 1787 and 1790. In the city centre, where the Bisagno stream catchment lies
69 (Fig. 1), Faccini et. al. (2015a) demonstrated a recent increase in the number of floods and
70 flash floods linked to both centennial climate oscillation and to massive land-use changes and
71 modifications of both the main and other minor hydrographical networks. In the urban area of
72 Genoa in particular an increasing trend of daily average rainfall (the ratio between the annual
73 rainfall and the total number of rainy days in one year) and of the average temperature were
74 measured (Faccini et al., 2015a; Pasquale et al., 1994; Russo et al., 2000). These variations
75 match with the data of weather stations worldwide (IPCC, 2013). The city of Genoa and the
76 Bisagno catchment in particular, show specific orographic and hydrographical features.
77 Apennine peaks of over 1000 metres are found only at a short distance from the coast. The
78 hydrographical network is characterised by particularly short streams within limited water
79 basins, often less than 100 square kilometres: therefore, concentration time during heavy
80 rainfall events is very short.

81 **Tab. 1 a, b** shows the most important flood events, which affected the Bisagno Valley in
82 Genoa city centre from 19th century to present day. These important events were classified as
83 both regular and flash floods (USA National Weather Service, 2008) and they occurred in the
84 main stream and some minor tributaries. In the 19th century four floods occurred and, at least
85 one, included a flash flood event. Of the eight floods occurred in the 20th century, three could

86 be classified as flash floods, while in the 3rd millennium two flash floods have already
87 occurred, in 2011 and 2014.

88 If we consider all the catchments in Genoa metropolitan area, just in the last 50 years many
89 other streams flooded: in 1977, 1993, 1994, 1995, 2000, 2007, 2010, 2013 and in 2014 (twice,
90 10th and 15th November) again with loss of life and serious damages and economic losses
91 (Faccini et al., 2005; 2012; 2015a; 2015b). The extraordinary frequency of flood events and
92 the consequent effects have made Genoa and the Bisagno stream in particular (**Fig. 1**)
93 important cases study worldwide (Rosso and Rulli, 2002; Silvestro et al., 2012; 2015; Ferrari
94 et al., 2014; Hally et al., 2015).

95 Since, according to historical data, the Bisagno flooded every 16 years averagely in the last
96 two centuries (**Tab. 1 a and b**) (and floods in Genoa metropolitan area every 7-8 years), the
97 aim of this work is to assess what has changed in the stream dynamics from 1800 to today. It
98 is well known how historical and anthropogenic variations in catchments affect alluvial
99 occurrences (De Roo et al., 2001; Chin, 2006; Garcia-Ruiz et al., 2008; Rhoads et al., 2015).

100 For this purpose, three significant events in terms of intensity and ground effects were
101 selected, one for the 19th century (25th October 1822), one for the 20th century (8th October
102 1970) and one for the 21st century, the recent flood of 9th October 2014. The first flood is
103 significant as it occurred at the end of the Little Ice Age (Mann, 2002) in a different climate
104 regime from today (Delile et al., 2016): moreover, the landscape was different from today as
105 the flood happened before the industrial revolution of the second half of the C19th when the
106 Genoese coast became one of the most important industrial center of Mediterranean area. The
107 flood event of 1970 is certainly the most famous for its dramatic ground effects (Faccini et al.,
108 2015a) which were also due to the effects of irrational urbanisation of the post-war period,

109 while the event of 2014 indicates the current climatic and geomorphological situation in
110 Genoa.

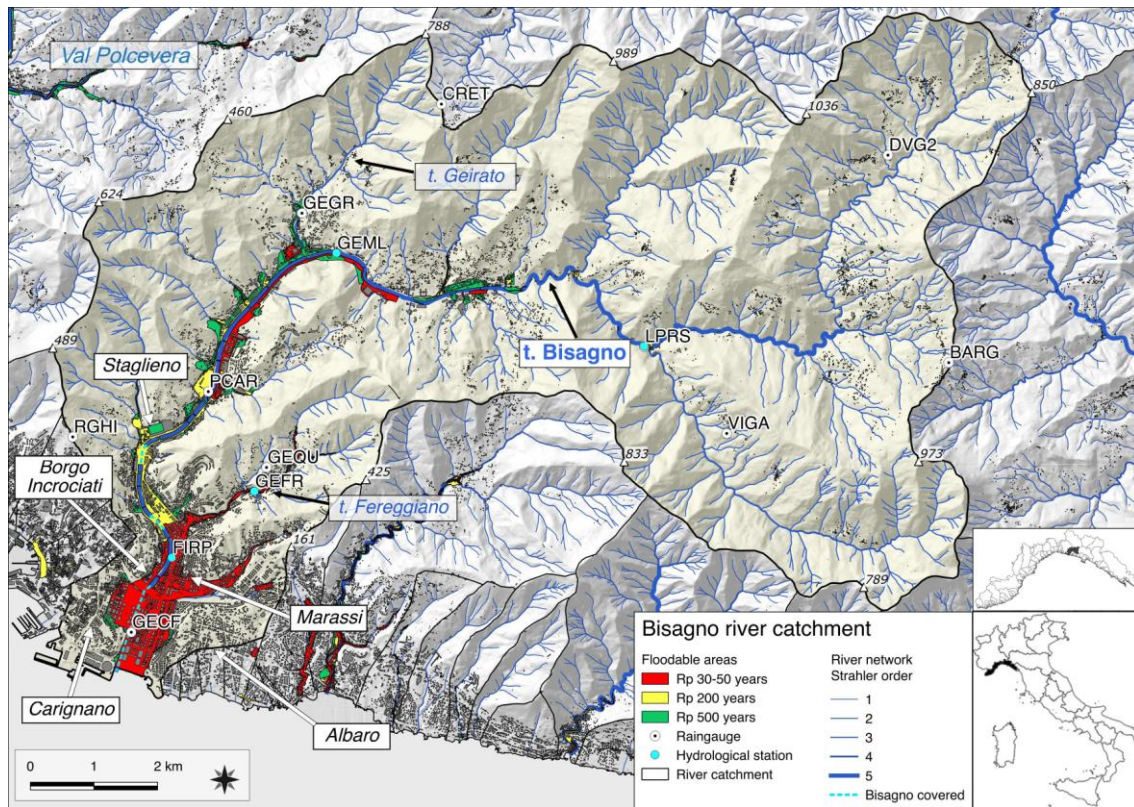
111 These flood events have been assessed through the reconstruction of rain histories and ground
112 effects; the results provide interesting evidence on the consequences of landscape and climatic
113 changes and allow us to learn useful lessons for the analysis of the flood events and
114 management of geo-hydrological hazard.

Storm event day	Rainfall event	Discharge	Flood event	Damage losses and other damages
1822/10/25	812 mm / 24 h in the lower Bisagno catchment (Marassi)	1200 mc/s	Regular flood. 15 hours of violent rainfall a 3 h peak between 10 a.m. and 1 p.m.	Many streams flooded: two bridges on the Bisagno collapsed. Mud and water reached the second floor of the houses at Foce district. Serious damage to shops, farms, factories and the public aqueduct. Estimated damage around half a million of Savoy liras
1842/8/25	247 mm in less than 10 h at Genoa University	?	Regular flood. Violent rainfall hit the slopes behind the city: flooding of some streams in the Bisagno catchment and of the Bisagno at Foce	Not quantifiable by the historical sources
1872/10/17	350 mm/48h at Genoa University	More than 300 mc/s	Regular flood hit the Western Riviera and the Bisagno and Scrivia Valleys. Overflowing of the Bisagno stream at Marassi, S.Agata and Foce.	Not quantifiable by the historical sources
1892/10/08	The only measure is 181.3 mm/24hs at Genoa University, in the city centre. The data appear underestimated, probably due to an error in the measurement	460 mc/s at Foce	Flash flood. The Bisagno stream flooded at Molassana and Foce.	The event involved mainly the upper part of the catchment. Damage not quantifiable by the historical sources

Storm Event Date	Rainfall event	Discharge	Flood events	Damage losses and other damages	Storm-related fatalities
1907/10/10	246 mm/24 h measured at Genoa University	500 mc/s	Regular flood. The Bisagno stream flooded at Molassana and Foce.	Not quantifiable by the historical sources	No reports of fatalities
1908/07/18	238,6 mm at Viganego rain gauge in 9 h with a peak between 4 - 6:30 a.m.	420-450 m ³ /s at Foce	Regular flood. The Bisagno stream flooded in the medium-upper part of the catchment.	Damages not quantifiable by the historical sources	No reports of fatalities
1945/10/29	285 mm/24 h (PCAR)	Lower Bisagno catchment and right slope, 202 mm/6 h. 450 m ³ /s at Staglieno Cemetery, final culvert under pressure	Flash flood. Flood of the Bisagno, Fereggiano, Veilino and Geirato streams	Serious damages, today hardly quantifiable	5 fatalities
1953/09/19	206 mm/24 h (GEFC), 486/5 d (GEGR)	750-800 m ³ /s, end culvert under pressure	Flash flood. Flood of the Bisagno, Torbido, Geirato, Veilino and Fereggiano streams	39 million Euros equivalent	No reports of fatalities
1970/10/08	453 mm/24 h (PCAR), 394 mm/24 h (RGHI)	950 m ³ /s end culvert under pressure	Regular flood. Flood of the Bisagno, Torbido, Geirato, Veilino, Fereggiano and Mermi streams	55 million Euros equivalent 1000 people left homeless; 50,000 people without jobs	10 fatalities only in the Bisagno valley, 44 in the Genoa metropolitan area
1992/09/27	435/24 h (PCAR), 337/24 hrs (VIGA)	700 m ³ /s	Flash flood. Flood of the Bisagno stream	75 million Euros equivalent, 250 people left homeless	No reports of fatalities in the Bisagno basin, 2 fatalities in the close Sturla basin
2011/11/04	166/1 h, 499/12 h (GEQU)	700 m ³ /s, final culvert under pressure	Flash flood. Flood of the Bisagno e Fereggiano streams	150 million Euros, 150 people left homeless	6 fatalities
2014/10/09	141 mm/1 h (GEGR), 401/24 h (GEGR)	1000 m ³ /s, final culvert under pressure	Flash flood. Flood of the Bisagno e Fereggiano streams	300 million Euros, 250 people left homeless	1 fatality

119

120 Tab. 1b - Disaster flood features of the Bisagno stream 20th and 21st century. For acronym in rainfall event
121 column see fig. 1.



123

124

125 Fig. 1 - Bisagno stream catchment with rain gauges, hydrometric stations and flood hazard zones

126 (red=high, yellow=medium, green=low) (modified from Città Metropolitana di Genova, 2015).

127 GEFC= Centro Funzionale; FIRP= Passerella Firpo; GEQU= Quezzi; GEFR: Fereggiano; RGHI=

128 Castellaccio; PCAR= Pontecarrega; GEGR= Geirato; GEML= Molassana; CRET= Creto; LPRS= La

129 Presa; VIGA=Viganego; BARG= Bargagli; DVG2= Davagna.

130 **2. Material and method**

131

132 2.1 Geographical settings of the Bisagno catchment

133

134 The Bisagno stream rises near Scoffera Pass (675 m) and its drainage basin covers 95 square
135 kilometres. The main stream has a total length of 25 km and its mouth is in Genoa city centre,
136 east of the natural amphitheatre of the old town. The maximum elevation of the catchment is
137 1034 m and the average gradient is 31%. 10% of the territory has a gradient of more than
138 75%, while only 5% has a gradient of less than 10%. 60% of the territory has a gradient
139 between 35% and 75%, while almost 70% of the total catchment is included between 0 and
140 500 m above the sea level. Today the urban area covers 15% of the total catchment. 57% of
141 the territory is wooded and this represents the main land use category for the higher part of
142 the valley which was almost entirely abandoned due to emigration and depopulation of the
143 countryside since the end of the 19th century.

144 The Bisagno valley is geologically characterized by marly limestone flysch of Mt Antola
145 (Upper Cretaceous) and related base complex of Montoggio shales. Ortovero Pliocenic clays
146 feature only at the city centre. The main stream is subject to erosion for 11 km from the
147 mouth, while the flood plain is heavily urbanised. The maximum width of the floodplain is
148 roughly 300 m before it reaches the main culvert which encases the stream for the last 1.4 km
149 as far as the stream mouth, while other minor culverts partially cover the stretch between the
150 A12 motorway and Genoa football stadium. The whole basin is subject to intense erosion
151 conditions affected by tectonic control. The reactivation of erosion processes is related to the
152 last drop of the base level (Brancucci and Paliaga, 2005; Paliaga, 2004; 2015).

153 The hydrological regime is characterized by frequent drought events, particularly in the
154 summer, and sudden floods, more frequent in autumn, with a time of concentration ranging
155 from less than an hour to 3 hours. The maximum discharge of the Bisagno stream was
156 estimated for different return periods ([Cittá Metropolitana di Genova, 2015](#)): for T50 the
157 estimated discharge is 790 m³/s (which already exceeds the capacity of the terminal culvert),
158 for T200 it is 1300 m³/s and for T500 it is 1785 m³/s. Estimated solid transport is higher than
159 25,000 m³/a ma, however, due to the intermittent flow regime, most of the sediment transport
160 is brought during the floods ([Cevasco et al., 2010](#)) when, in addition to geomaterials (mainly
161 sand, gravel, pebbles and boulders), trees and urban waste from illegal dumps are transported
162 as well ([Faccini and Vassalli, 2008](#)).

163 The Bisagno catchment is affected by more than 300 landslides most of which occur in areas
164 affected by deep-seated gravitational slope deformation. Sediment transport during flood
165 events can be considerable, with reactivation of landslides after prolonged rainfall and debris
166 flow events during flash floods ([Tung-Chiung et al., 2010](#)).

167 The coastal climate is characterised by short and mild winters (average temperature in January
168 8°C), temperate summers (average temperature in July 24 °C) and widespread rainfall in all
169 seasons with the maximum occurring in autumn (150-200 mm in October) and the minimum in
170 summer. The annual average rainfall ranges from 1100 mm to 1300 mm and the annual average
171 temperature is just less than 16 °C. Overall, it is a humid-mild climate with short dry season
172 restricted to one or two summer months ([Sacchini et al., 2012](#); [ARPAL, 2013](#)).

173 Flood events, with consequent damages, have affected Liguria and Genoa Metropolitan Area in
174 particular, with an apparent recent increase in their number and their effects. In terms of their
175 meteorological character, these events are all related to a blocking anticyclone setting up a
176 prefrontal flow in the warm branch of the perturbation coming from the Atlantic Ocean,

177 which generates convective systems resulting in extremely intense and localized rainfall
178 sufficient to generate flash floods (Russo and Sacchini, 1994; Faccini et al., 2015a).

179

180 2.2 Research methodology

181

182 Three flood events from 19th, 20th and 21st century were selected due to their importance in
183 terms of intensity, historical significance and ground effects. The isohyets maps were realized
184 from data recorded at different weather stations by local environmental authorities and from
185 documentary sources. For the flood event of 2014, maps and meteorological data produced by
186 ARPAL (Environmental Protection Regional Agency) were analysed, in addition to direct
187 surveys carried out by the authors of this paper and online sources (documents and images).
188 For the flood events of 1970 and 1822 both scientific literature (Bossolasco et al., 1971; Cati,
189 1971) and contemporary reports were taken into account. For 1822 the correspondence
190 between a physician from the University of Genoa and other contemporary intellectuals and
191 scholars was an important source of data. Written accounts by writers and poets living in
192 Genoa during the flood, such as George Gordon Lord Byron and Mary Wollstonecraft
193 Godwin Shelley were also consulted for their precise description of the flood event. Land-use
194 changes since 1822 were reconstructed through the comparison of historical and modern
195 maps, such as the *Minute di Campagna* of 1816-1829 (1:9.450) and the *Gran Carta degli*
196 *Stati Sardi di Terraferma* produced between 1852-1874 (1:50.000), both produced by the
197 Sardinian Kingdom. There is increasing attention in the use of visual sources for the
198 reconstruction of past landscape dynamics (Gaynor and McLean, 2008; Piana et al., 2012). In
199 addition to historical cartography, the landscape history of the Bisagno Valley in the first half
200 of the 19th century was reconstructed using contemporary cadastral documents and

201 topographical drawings and paintings produced by local painters such as Luigi Garibbo
202 (1784-1869) and Pasquale Domenico Cambiaso (1811-1894). Recent landscape changes and
203 urban sprawl were reconstructed by analysing the 1973 Ligurian Regional Technical Map and
204 Google EarthTM. Moreover, land use maps of 1976, the CE project, “Corine Land Cover”
205 ([European Environmental Agency, 2006](#)) and the 2012 update ([ISPRA, 2015](#)) were analysed.
206 The maps were geo-referenced using GIS software in order to reconstruct the land use
207 variations occurred in the last three centuries. The urban growth was defined by examining
208 the map of urban evolution produced by Regione Liguria (1986) integrated by ISTAT data
209 ([Istituto Italiano di Statistica, 2011](#)), which categorizes the buildings by decade of their
210 construction. Moreover, topographical maps published by Regione Liguria (Regional Map,
211 1990-2006) and aerial photographs produced by the same institution (1990-2004) integrated
212 the data. Maps from different periods were overlaid and compared using known monuments,
213 forts or churches as reference points.

214 The data were examined to investigate variations in the flood events of the last three centuries. For
215 the climate aspects we used historical data from Genoa University weather station, established in
216 Genoa city centre in 1833 and constantly in use ever since. In particular historical records for
217 average annual temperature, annual rainfall, number of rainy days (rainfall > 0.2 mm) and annual
218 precipitation rate, calculated as the ratio between the annual rainfall (mm) and the number of rainy
219 days (n), were examined.

220 3. The main Bisagno stream disaster floods

221

222 3.1. The 25th October 1822 flood event

223

224 This disastrous flood event was reported in detail by Italian newspapers (*La Gazzetta di*
225 *Genova 26th and 30th October 1822, Gazzetta Piemontese 31th October 1822 and 2nd*
226 *November 1822, Gazzettino di Parma 2nd November 1822, Tab. 1a*). The flood event
227 occurred on the 25th October, when part of Genoa was flooded, with severe damage to the
228 roads and the shops, destruction of walls and cultivations and great loss of livestock for an
229 estimated damage of around half a million of Savoy liras. All the bridges of the lower
230 Bisagno Valley collapsed, as reported by Lord Byron who described the flood event as a
231 “deluge”, with the road being an “impassable cascade” and “all landscape under water”
232 (Byron, 1980, Letter 10, pp. 28-30). Contemporary to Byron, Mary Shelley stated that in 20
233 minutes of rain the flood “sufficed [...] to lay flat the walls which in that hilly country support
234 the soil” (Shelley, 1844, p. 58).

235 The contemporary chronicles state that the Bisagno Valley was completely flooded from the
236 walls of “Fronti basse” to the Hill of Albaro downstream of Marassi, with the houses
237 submerged up to the second floor, the level of water which reached 12.5 palms (1 Genoese
238 palm = 24.8 cm) and the St. Agata and Pila bridges swept away. The peak of the flood was
239 probably between the Bisagno and Sturla Valleys and the left side of the Polcevera Valley
240 (Fig. 1). Professor Antonio Pagani from the University of Genoa had been recording
241 meteorological data for 25 years: on the 25th October 1822 his rain gauge, which was located
242 in Marassi, measured 30 inches of rain (812 mm). This incredible data was the object of a
243 correspondence with the Universal Library of Geneva aimed to find out how the rainfall

244 measurement was obtained. This correspondence is also mentioned in the “Annales de Chimie
245 et Physique” by Arago and Gay Lussac who defined Pagani as “observateur exacte” (exact
246 observer, 1824, p. 406 vol. XXVII). The rain started in the night between the 24th and the 25th
247 and lasted 15 hours. The phenomenon become more intense around 10 a.m. on the 25th, when
248 the allotments of the Bisagno began to be flooded; the complete flood occurred around 11:30
249 a.m. and by 1 p.m. most of its worst ground effects had already happened. Mary Shelley
250 reports that “a cloud, surcharged with electricity and water, burst above our heads in one
251 torrent of what was rather a cataract than rain” (Shelley 1844, p. 58). Based on contemporary
252 accounts, the flooded area was reconstructed and it is shown on a contemporary map (**Fig.**
253 **2a**). The descriptions suggest that, due to a stoppage situation between the cyclonic
254 circulation over the Atlantic and the anticyclone between Eastern Mediterranean and Eastern
255 Europe the intense rainfall started up in the warm pre-frontal sector of the perturbation. The
256 pre-frontal phase was followed by another peak at 10 a.m., probably caused by a stationing
257 convective super-cell stretched towards NNE along the Bisagno and Geirato Valleys, similar
258 to the structure of other recent flood events in 2010 (Faccini et al., 2015b), 2011 and 2014
259 (Faccini et al., 2015a).

260

261 3.2. The 8th October 1970 flood event

262

263 In October 7-8, 1970 Genoa City suffered probably the most catastrophic flood event of its
264 history when an anticyclone block generated recurring convective systems which hit Genoa
265 city and the hinterland and above all the Bisagno Valley from the morning of 7th October to
266 early hours of 9th October. Most of the streams and creeks in the Municipality flooded large
267 urbanized areas in a very short time. The 1970 event in Genoa City was also the most

268 dramatic in terms of damage, there were 44 fatalities and over 2000 individuals were
269 evacuated.

270 On the evening of 7th October pre-frontal storms struck the western side of the city and the
271 centre and the hinterland the day after. The storm affected Genoa before the arrival of the
272 cold front due to an anticyclone block in Eastern Europe (Bossolasco et al., 1971). The heavy
273 rainfall lasted more than 24 hours with highs at Bolzaneto rain gauge (Polcevera Valley,
274 north-west of Genoa centre) where over 950 mm of rainfall in 24 hours were measured. The
275 exceptional amount of rainfall measured in Bolzaneto indirectly confirmed the accuracy of
276 Pagani's data for the flood of 1822. Over the city centre and the Bisagno Valley, 400 mm in
277 24 hours was recorded. The Bisagno stream channels overflowed submerging coastal areas
278 and the city centre. Due to the absence of discharge gauge stations, the maximum flow rate of
279 the Bisagno stream was estimated by Cati (1971) as 950 m³/s (12 m³/s/km²) near the railway
280 station of Genoa Brignole. The maximum flow rate capacity of the Bisagno coverage was
281 approximately 700 m³/s. The cumulated rainfall registered at other rain gauges of the Bisagno
282 catchment show a sequence of flow peaks with concentration time around 2-3 hours. Overall,
283 the flood event lasted 28 hours and the overflow of the Bisagno occurred at 3 p.m., c.1 hour
284 after the peak rainfall measured in the centre of the catchment (Faccini et al., 2015a). The
285 submerged area and water heights are reported in **Fig. 2b**. The map shows the Bisagno plain
286 downstream of Marassi where the depths of flooding ranged from a few centimetres to up to 3
287 metres.

288

289 3.3. The 9th October 2014 flood event

290

291 Between October the 9th and 10th 2014 an intense and localized rainfall occurred. This flood
292 event seems broadly comparable to those described in the recent past over the Ligurian Gulf
293 (Faccini et al. 2012; 2015a; 2015b; Silvestro et al. 2012; Hally et al. 2015), with repeated "self-
294 regenerating" thunderstorms, stationing for several hours over the city and starting up in the
295 warm pre-frontal sector of the perturbation. The rainfall was very intense in the Bisagno
296 valley and in the closest surroundings and much lower in height over the rest of Liguria, with
297 less disastrous effects on the ground. Satellite and radar images showed the persistence of
298 storm cells, organized in "V-shaped" structures which were formed over the Liguria Gulf,
299 southwest of Genoa, moving down towards the city and the hinterland, driven by the SW
300 winds at 500 hPa (Faccini et al., 2015a). The flood event developed into a blocking situation
301 between the cyclonic circulation over the Atlantic and the anticyclone between the Eastern
302 Mediterranean and Eastern Europe. Between the two baric figures a flow of currents from SW
303 at high altitude and SE in the lower layers has settled. Furthermore, over the "Pianura
304 Padana" (Po river floodplain) the anticyclone structure stretched causing the influx of cooler
305 air that overflowed into the Liguria Gulf through low level (< 500 m asl) Apennine passes
306 with northern winds. Immediately east of these situations of wind convergence to the ground
307 the storm cells were developing. While a large high-pressure area was situated in the whole
308 Italian peninsula and most of Liguria, a flood affected the city centre and the Bisagno Valley.
309 The convergence to the ground and the shear *Scirocco* and *Libeccio* (SE and SW winds)
310 favoured local atmospheric instability culminating in the event of the evening on October the
311 9th. The instability was also fuelled and supported by the contribution of very mild and humid
312 air at 850 hPa (Faccini et al., 2015a), the support of the still warm sea and the effect of the
313 orographic barrier of the Apennines (Sacchini et al., 2012). This atmospheric configuration is

314 typical and recurrent for each flood event in Liguria between the late summer and the early
315 autumn (Russo and Sacchini, 1994).

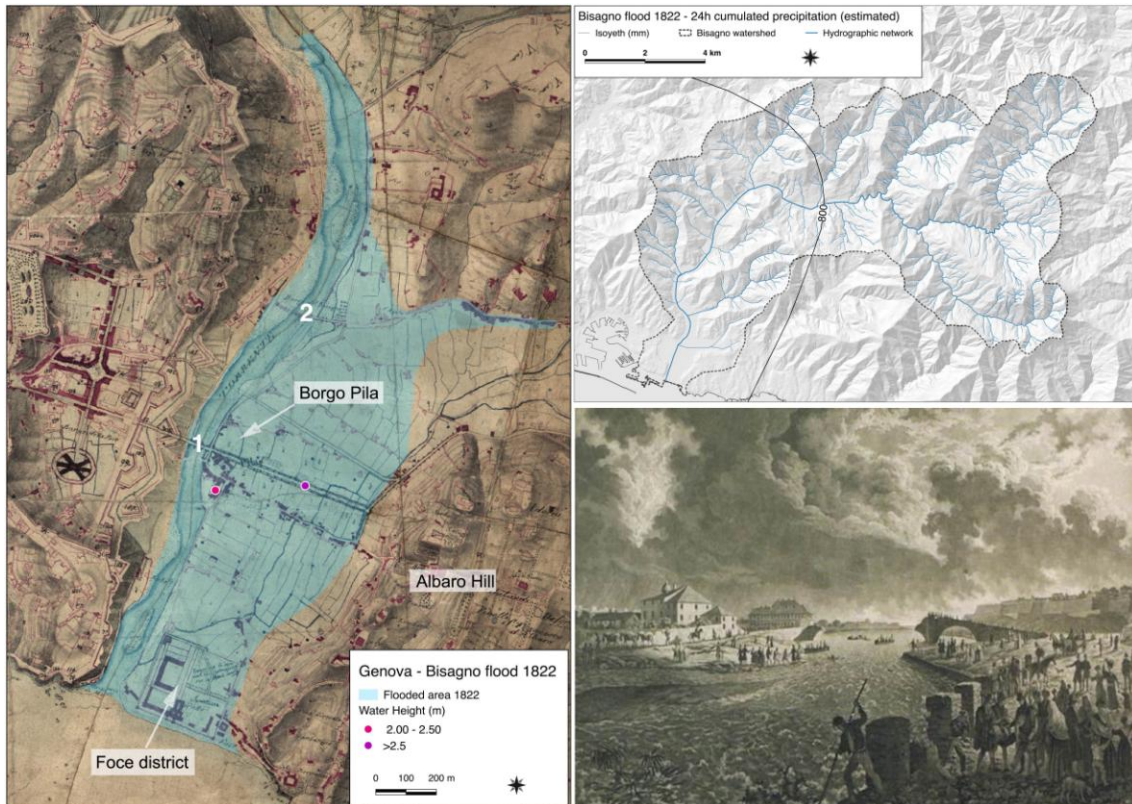
316 The maximum rainfalls were recorded in the middle Bisagno valley. Rainfall peaks of about
317 140 mm/h were recorded in the Geirato Valley and a total of 754 mm/5 days. The isohyets'
318 distribution showed the highest rainfall rates along a narrow band which followed the shape
319 of the valley. The culmination of the event took place in the afternoon-evening of the 9th with
320 the disastrous flooding of Bisagno and Fereggiano (its last left tributary) watercourses during
321 the night. The concentration time was immediate and the water level reached its maximum
322 after one hour from the rainfall peak. The maximum flow rate at Foce was estimated about
323 1000 m³/s, a value that has a return time of 100 years (Città Metropolitana di Genova, 2015).

324 Near the Passerella Firpo bridge, the level of Bisagno stream recorded an increase of nearly 6 m.
325 The final culvert under the city is inadequate in section; consequently, the flooding of the Bisagno
326 stream in the terminal stretch between Genoa football stadium and the railway track near Genoa
327 Brignole station occurred: in the city the water reached heights up to 2.5 m as a function of the
328 topographic surface (Fig. 2c). The flood devastated homes and businesses over large areas of the
329 lower Bisagno Valley where a fatality occurred. Shops, markets and craft activities in the centre of
330 Genoa, just barely recovered from the flood on November the 4th 2011, were again devastated.

331 The alluvial plain of the Bisagno stream in the city centre between Brignole (railway station),
332 Foce and Via XX Settembre (the main commercial road in the city) was entirely affected by the
333 flood: laminar and turbulent flows have caused water levels between 0.3 and 2 m (Fig. 2c) and
334 stagnant water in lowest areas reached more than 2 m and up to 3 m in Borgo Incrociati.

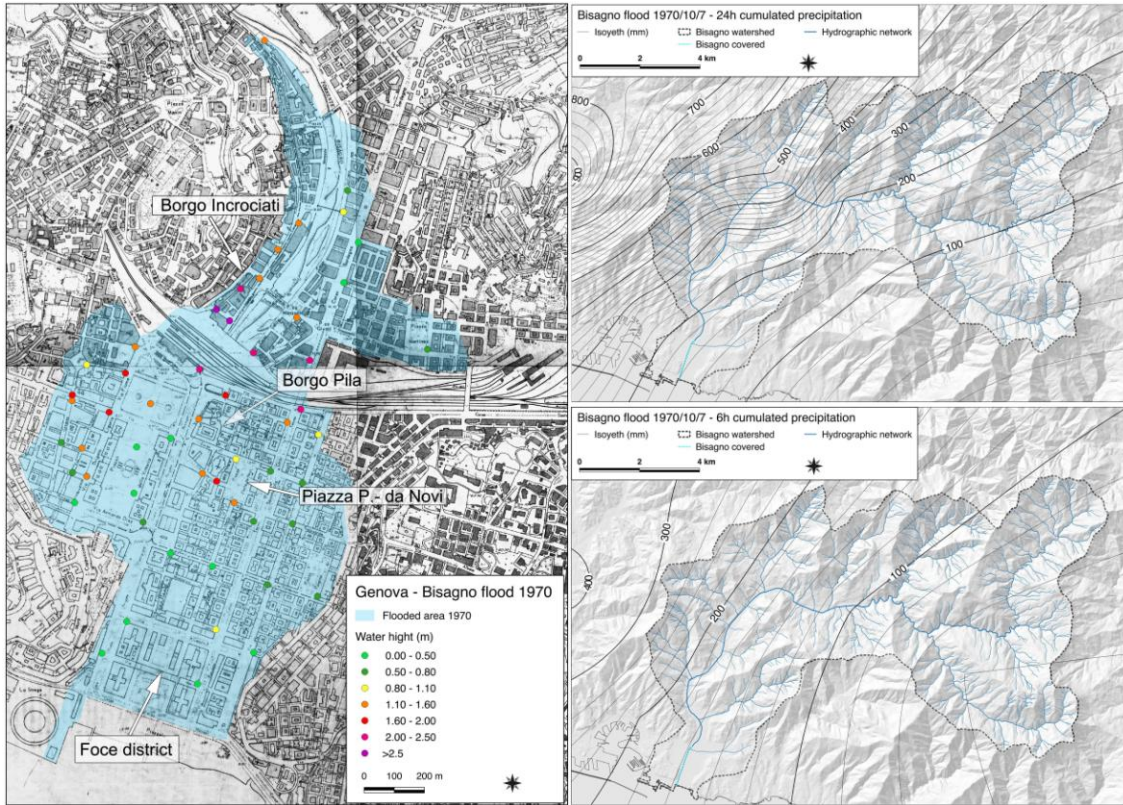
335 From a meteorological point of view, the Gulf of Genoa is characterized by a typical
336 circulation called "Genoa Low". It is a Mediterranean cyclone of orographic origin (Jansà et
337 al., 2014) that forms or intensifies from a pre-existing cyclone to the south of the Alps over

338 the Gulf of Genoa, Ligurian Sea (Sáez de Cámara et al., 2011). This secondary depression
339 linked to the arrival of Atlantic perturbations behind the Alps is formed on the Genoa Gulf
340 primarily in the autumn-winter and spring periods (Anagnostopoulou et al., 2006). As a
341 consequence, conditions of sharp thermodynamic contrast between hot humid Mediterranean
342 air masses and cold air masses of continental origin are created. The Genoa Low toward the
343 centre of the Gulf redirects the cold air masses over the Po Plain and behind the mountainous
344 Ligurian arch, where the winds overflow into the Ligurian Gulf through the mountain passes,
345 including the ones between Savona and Genoa, which reach modest altitudes, between 450
346 and 600 m asl. This typical circulation is responsible for the large amounts of rainfalls
347 distributed over the region surrounding the Ligurian Sea (Sacchini et al., 2012). Between the
348 end of summer and autumn, when the sea temperature is at its top, the thermodynamic
349 contrast of similar air masses, together with the wind shear at different altitudes around the
350 Genoa Gulf (N at sea level, SE at 850 hPa, SW at 500 hPa) are responsible for triggering of
351 thunderstorm convective systems and sometimes super-cells (Silvestro et al. 2012; 2015).
352 These convective systems originate in the Ligurian Sea and move to the inland area with a
353 typical V-shape. The perturbations canalise along the valleys as far as the main mountain
354 ridge which accentuates the precipitations. This is the cause of all the flood events which hit
355 Genoa since at least 1970 and probably even the earlier ones, for which, however, no detailed
356 meteorological data remain.



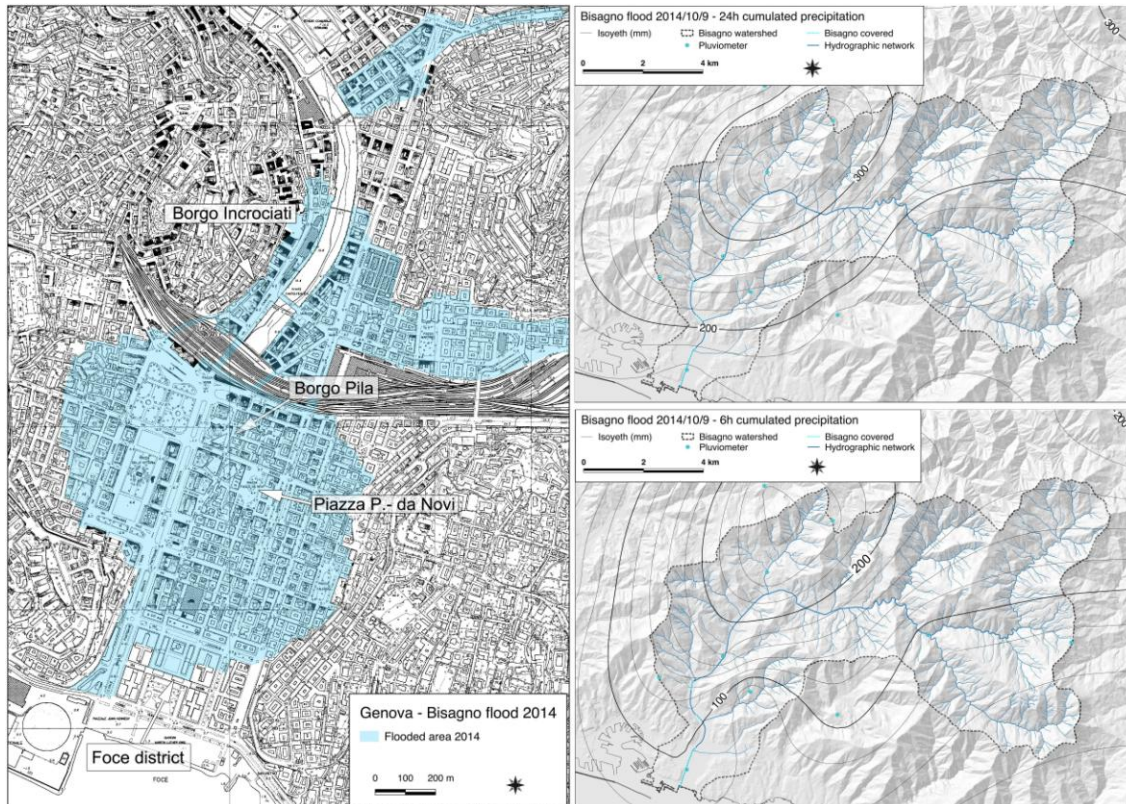
357
 358
 359
 360
 361
 362
 363
 364

Fig. 2a - Water height and ground effect, rainfall 24 h, 25th October 1822 event (1: Pila Bridge; 2: St. Agata bridge). Rainfall: 812 mm/24 h at Marassi rain gauge; Max Water height: 12 Genoese palm (c. 3 m) downstream of Borgo Pila at Foce district; discharge: 1200 m³/s at Ponte Pila. Print of the flood at Ponte Pila by Luigi Garibbo, 'Veduta del ponte della Pila sul Bisagno presso alle mura di Genova poco dopo il suo diroccamento per la gran piena del 26 Ottobre 1822', Collezione Topografica del Comune di Genova



365
 366
 367
 368
 369
 370

Fig. 2b - Water height and ground effect, rainfall 6 and 24h, 8th October 1970 event.
 Rainfall: 453 mm/24 h at Pontecarrega station; Max Water height: 2 m between Borgo Pila Church and Paolo da Novi Square at Foce district, 3.5 m at Borgo Incrociati; Discharge: 950 m³/s at Borgo Incrociati.



371
 372
 373
 374
 375
 376

Fig. 2c - Water height and ground effect, rainfall 6 and 24 h, 9th October 2014 event.
 Rainfall: 392 mm/24 h at Geirato station; Max Water height: > 2m between Borgo Pila Church and
 Piazza Paolo da Novi at Foce district, 3 m at Borgo Incrociati; Discharge: 1000 m³/s at Borgo
 Incrociati.

377 4. Geo-hydrological factors analysis

378

379 4.1. Urban sprawl

380

381 Genoa Municipality is one of the ten metropolitan cities of Italy, consisting of a total
382 population of 1,600,000 living in the wide metropolitan area, of which 600,000 live in the
383 city. The original structure of the city since before the Roman times and up to the 19th century
384 was included between the small natural gulf where the harbour was built and the right side of
385 the Bisagno Valley (**Fig. 1**), with hardly any settlement either on the alluvial plains of the
386 streams and on the hills around. In the 19th century, when Genoa was annexed to the Savoy
387 Kingdom (1815) and to the Italian Kingdom (1861) the urbanisation of coastal and alluvial
388 plains began, particularly the Polcevera (west) and the Bisagno Valleys (east). While the area
389 west of the historical centre lived a rapid industrial development, the Bisagno Valley has
390 always been characterised by the presence of services such as Staglieno municipal cemetery.
391 In the 20th century the urbanisation of the hillside area of the inland part of Genoa begun, with
392 a peak between the 1950s and the 1980s and it is still partly continuing nowadays. Today
393 more than 150.000 people live in the Bisagno catchment, where most of the commercial and
394 artisanal businesses and city services are settled.

395

396 4.1.1. River bed changes

397

398 **Fig. 3** shows the evolution of the city until 1986: it is integrated by the graphs, which
399 document that the urban growth continued until at least 2006. From the natural amphitheatre
400 around the historical centre, the built up surface in the late 19th century increased in the
401 Bisagno plain where the buildings soon occupied the whole bottom of the valley. This process

402 affected the lower-medium bottom valley before WW2 and successively the upper part of the
403 valley and the hillside after WW2.

404 The map of soil consumption (**Fig. 4**) shows the urban growth by altitude, documenting that
405 most of the consumed soil in the valley is included between 0-50 m of altitude in the lower
406 Bisagno Valley, while its upper part is characterised by scarce density of built up surface, in
407 accordance with what is shown in **Fig. 3**.

408 **Fig. 5** shows the modifications of the Bisagno stream riverbed during three centuries. The
409 riverbed has undergone a significant constriction in the channel width in the last 200 years. In
410 1822, the Bisagno stream occupied the entire alluvial plain from the city walls to the hill of
411 Albaro. Its course was braided with many small channels. There were no buildings along the
412 riverbed, apart from a leper hospital and the village of Borgo Pila. The Bisagno was crossed
413 by some bridges, particularly St. Agata bridge along the ancient Roman route which linked
414 Genoa with the Eastern Riviera and Pila bridge which lead to the city centre through Porta
415 Pila gate (**Fig. 2a**). The name “Pila” is probably an ancient Ligurian word, which indicates the
416 mouth of a stream, providing evidence of the evolution of the alluvial plain towards the actual
417 location from the Bronze Age to present day, a process which is also confirmed by geological
418 and archaeological data. Until 1822 Borgo Pila village was 5 metres higher than today, it was
419 lowered at the end of the 19th century to facilitate the road link with the new road to the centre
420 of Genoa (currently called Via XX Settembre) through Pila bridge. St. Agata bridge was
421 approximately 280 m wide, while Pila bridge crossed a 120 m wide channel.

422 By 1970 the situation was completely different due to the urban sprawl to the East, which
423 started when the municipalities of the Bisagno Valley were included in the Genoa
424 Municipality (1873). In the same period the railway line from France to Tuscany was built
425 (1868) and Genoa Brignole Station (1905). The Bisagno stream is embanked upstream of the

426 station and completely covered downstream, parallel to the stream are two roads. The plain is
427 completely built up.

428 The bridge of St. Agata is 70 m wide and only 5 arches remain of the original 28. Ponte Pila
429 does not exist anymore and the riverbed is only 50 metres. The culvert of the Bisagno stream
430 was decided in the 20th century: it was calculated by a group of three engineers on commission
431 by the Genoa Municipality in 1908 (Inglese et al., 1909): using hourly values of precipitation
432 definitely modest, they calculated that the maximum flow rate of Bisagno "could not exceed 500
433 m³/s". In 1905 eng. Cannovale from the Municipality of Genoa, estimated more correctly a
434 maximum range of about 1200 m³/s; the data was based on the rainfall measurements of Prof.
435 Pagani related to the flood of 1822. Unfortunately, they were thought to exaggerate the true
436 rainfall and not taken into account by the pool of engineers during the design phase. This
437 value is very close to the water flow peaks that, in recent years, the stream has reached during its
438 violent floods. Based on the underestimated data of 1908, a large project of urban development
439 was carried out during the fascist period and a large square was built which could celebrate the
440 fascist regime. In 1936 the culvert was finished and in 1938 Mussolini could give a famous
441 speech in Piazza della Vittoria. In the same period in Marassi the Fereggiano stream (the last left
442 tributary of the Bisagno), was embanked first and then covered for more than 1 km from where it
443 joins the Bisagno stream. The Fereggiano stream became sadly famous for the flood of 4th
444 November 2011 when it caused much damage and six fatalities.

445 In 2014 urbanization is complete, the embankments are characterized by roads, warehouses and
446 factories while the alluvial plain and the sides of the valley are heavily built up with residential
447 buildings. Before Football World Cup of 1990, new culverts were built downstream of the
448 cemetery of Staglieno at Genoa East motorway exit and near the football stadium. St. Agata
449 bridge was repeatedly damaged and almost destroyed during the floods of 1970 and 1992. Of the

450 ancient bridge only two arched remains, located upstream of the final culvert, which is 50 metres
451 wide.

452

453 *4.1.2. Land use variations in the catchment*

454

455 The pie charts of [Fig. 6](#) summarise the land-use of the Bisagno stream basin in 1822, 1970
456 and 2014.

457 In 1822 the urban or built up area is only 2% of the entire catchment, while 22% of the area is
458 characterised by cultivation, with many vineyards. The bare land, a category which also
459 includes the pastures of the higher part, occupies 26%, while woodland, mainly managed fruit
460 chestnut orchards, covers 21% of the valley. Due to lack of data for the period under
461 consideration, the land use for 29% of the total surface of the Bisagno basin in the high valley
462 remains unknown. These are mainly uplands over 700 m of elevation which today are
463 scarcely wooded and partly terraced. Current field evidence, in addition to recent studies on
464 the landscape history of the Apennines ([Moreno and Cevasco, 2008](#)) suggests that these were
465 open areas used as pastures and cultivations or hayfields spread over terraces near the
466 villages. In 1970 the situation is different, with 12% of urban area and only 17% of cultivated
467 fields, with a remarkable reduction of the vineyards, from 7% in 1822 to 1% in 1970, while
468 the wooded areas cover almost half of the catchment (44%). In 2014 the wood characterises
469 more than half of the entire territory (57%) and the urban part has increased to 15%: there is
470 further reduction of cultivated areas and bare land.

471 Three sites of the middle-lower Bisagno Valley were chosen as they show different landscape
472 features: St. Agata, which was an ancient village of the lower valley, located just before the

473 terminal culvert, Marassi close to the confluence with a small final tributary (Fereggiano
474 stream) and Staglieno, in the medium part of the main valley,

475 For each site an investigation of the landscape evolution in the last 3 centuries was carried
476 out. This analysis draws upon recent approaches to topographical art for landscape history
477 (Barrell, 2013; Piana, 2015) consisting in the comparison and integration of a wide range of
478 sources which, in addition to drawings and paintings, includes cartography, archival papers,
479 historical photography and field data. The analysis of the landscape dynamics in three
480 different case studies of the middle-lower stretch of the Bisagno shows a general reduction of
481 the riverbed alongside with the progressive growth of the built-up surface and the reduction of
482 managed fields and orchards, in accordance with the pie charts of **Fig. 6**.

483 Located less than 2 miles from the coast St. Agata was a village set immediately outside the
484 seventeenth-century walls of Genoa in correspondence of a 280 m bridge on the historical
485 route from Genoa to the Eastern Riviera and Central Italy. A watercolour by Pasquale
486 Garibbo (c. 1825), taken from the hill of Carignano, shows the bridge in its entire width and
487 the wide bed of the Bisagno stream (**Fig. 8.1-A**). The surrounding landscape is characterised
488 by little clusters of buildings, scattered villas and terraces along the lower part of the slopes,
489 providing evidence of the agricultural vocation of this area in the early C19th. If compared to
490 Marassi and Staglieno, the area of St. Agata and the village of St. Fruttuoso behind show a
491 higher density of buildings. The map of **Fig. 7.1-A** focuses on the area near the bridge,
492 documenting the agrarian landscape which is mainly constituted by fields and a little olive
493 orchard in an area called “la piana delle olive” (the plain of the olives). Before the building of
494 Staglieno cemetery here was a mass grave which was partly destroyed during the flood of
495 1822, and contemporary accounts refer to skeletons and bones swept away by the river
496 (Marcenaro and Repetto, 1970). Today the river bed is considerably narrower as is the bridge

497 which partly collapsed after the floods of 1970 and 1992 and is now replaced by a modern
498 bridge.

499 The second case study is Marassi, a few miles downstream from Staglieno, where a painting
500 by Pasquale Garibbo (c. 1825) shows the Bisagno in foreground with the river bed bordered
501 by an embankment wall (**Fig. 8.2-A**). The hamlet of Marassi, which is now part of Genoa city
502 centre, consisted of a mixture of villas and farms around the parish church of St. Margherita.
503 The background of the painting shows the bare mountains above Marassi traditionally used as
504 common lands with pastures and wooded areas which were used for wood fuel ([Cevasco and](#)
505 [Moreno, 2014](#)). Different types of cultivations included vineyards, traditionally kept on high
506 trellis and fruit trees such as the mulberry tree. The almost contemporary map (1822, **Fig. 8.2-**
507 **A**) depicts a landscape which is mainly rural, with predominance of vineyards, some olive
508 orchards and bare land in the higher part of the side as in the watercolour by Garibbo. In the
509 early 20th century Marassi still had a rural connotation, with cultivated fields and bare
510 mountains clear of vegetation where the forts established in the 18th and 19th century to
511 protect the city of Genoa stand on the top (**Fig. 8.2-B**). As in Sant'Agata, the maps of 1970
512 and 2014 (**Fig. 7.2-B and C**) and a current picture of the area (**Fig. 8.2-C**) show the changes
513 occurred in the post-war period in terms of built-up surface and loss of agricultural landscape,
514 with most of the territory which is now part of the city of Genoa. Today the church of St.
515 Margherita is hidden behind high buildings to the extent that it is almost invisible from the
516 same point of view of **Fig. 8.2 B and C**. The recent abandonment of traditional pastoral
517 practices in the area resulted in the regrowth of vegetation on the higher part of the area,
518 where only the top of the mountains, due to scarcity of soil and frequent fires is still bare and
519 open. The last case study is Staglieno, where the cemetery of the city of Genoa was built in
520 the mid-19th century. The map of **Fig. 7.3-A** shows the situation in 1822: the southern slope is

521 characterised by extensive vineyards, often mixed with olive trees and bare land along the
522 higher slopes. Bare land areas, called ‘gerbido’, were often common lands used for animal
523 grazing or hay making as in the higher part of the slopes above Staglieno or Marassi. The
524 opposite site of the valley is wooded, however, as shown below, the landscape is clear and
525 various. A painting (Pasquale Domenico Cambiaso, c. 1840) depicts the area of Staglieno
526 while the building of the cemetery of Genoa is taking place (**Fig. 8.3-A**). The territory is open,
527 with bare mountains (common lands) in the background and a mixed landscape of cultivated
528 fields and wooded parts. The painting shows how the left hand side of the Valley, very steep
529 and facing North, is generally open with scattered groups of trees which contemporary
530 documents identify as chestnuts. A photograph of C. 1930 shows the urban growth along the
531 bottom of the valley and the cemetery which covers most of the hill of St. Bartolomeo (**Fig.**
532 **8.3-B**). In 1970 the map of **Fig. 7.3-B** provides evidence of the urban growth during the post-
533 war period, when buildings and industries were established where once were cultivated fields,
534 orchards and terraces. The vineyards are replaced by olive orchards, while the woodland of
535 the left side is denser than in the 19th century but its size was reduced to build some factories
536 and new buildings. These buildings are very evident in the current photograph (**Fig. 8.3-C**),
537 which shows the impact of uncontrolled urbanisation in the area. As also shown by the current
538 map (**Fig. 7.3-C**), there are still some managed fields in the area, mostly above the cemetery
539 along the slope which faces South.

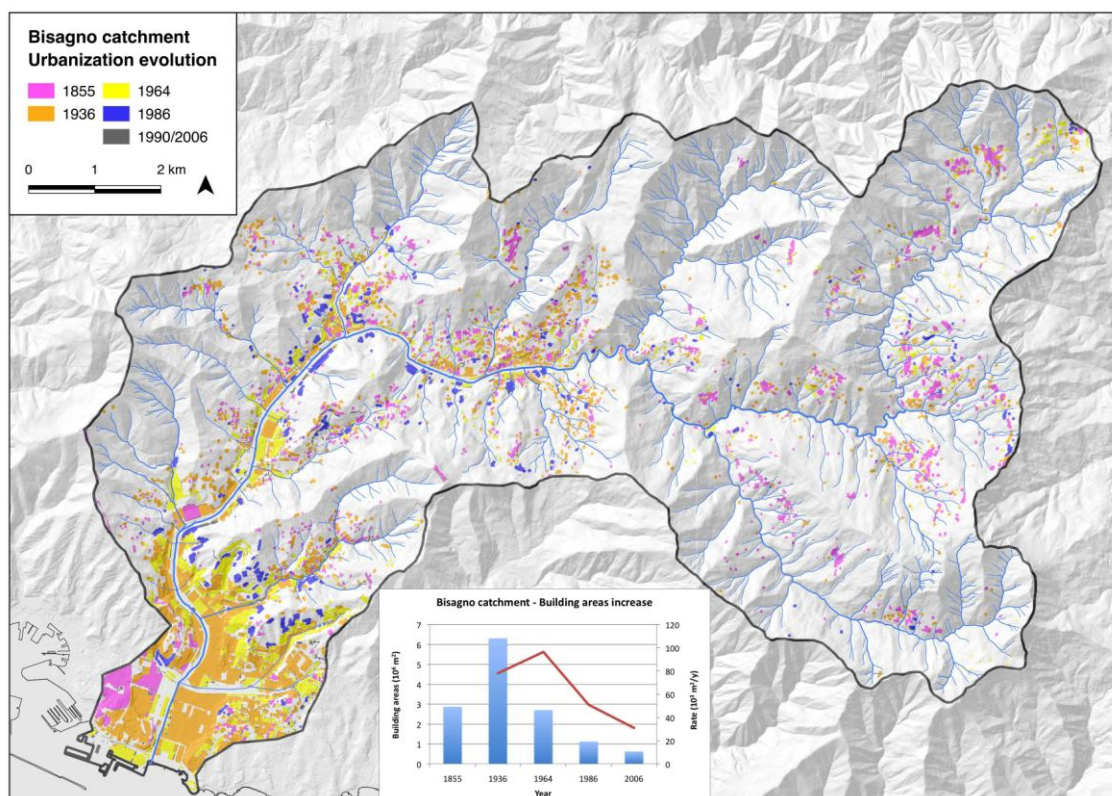
540

541 4.2. Climate change

542

543 **Fig. 9** enables us to observe the distribution of the parameters relating to average annual air
544 temperature and the daily rainfall rate over time (almost 200 years), as calculated from the

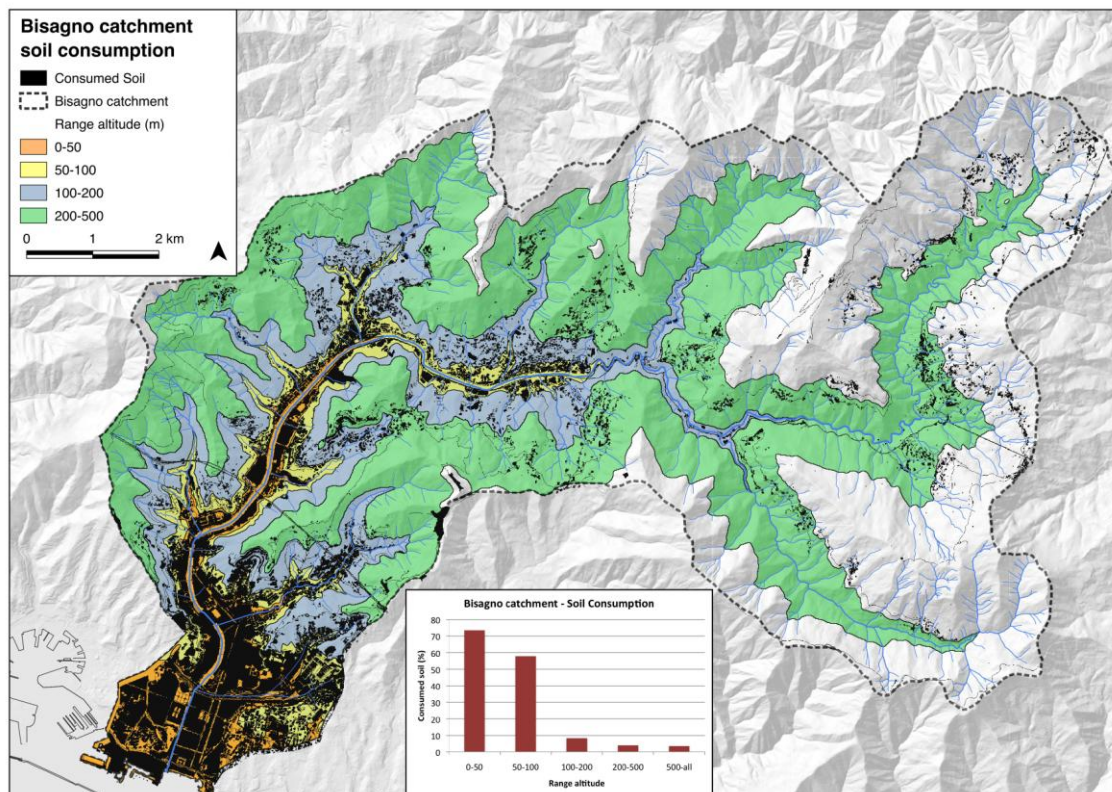
545 historical data recorded from 1833 by the University of Genoa rain gauge that is located in the
546 ancient city centre at 50 m asl. The average annual air temperature varies from a minimum of
547 14.1 °C, detected in 1956, to a maximum of 17.4 °C in 1865, with a mean value of 15.7 °C
548 and a standard deviation of 0.6 °C. The series shows cyclical fluctuations and a significant
549 increase in time. The rainfall rate, calculated as the ratio between the annual rainfall and the
550 number of rainy days, shows a significant increase over time and a greater dispersion of data
551 in the last 50 years, linked to the similar dispersion of the total annual rainfall (Russo et al.,
552 2000). The test of Mann-Kendall (Mann, 1945) has been applied to them in order to assess the
553 presence of a statistically significant trend. The average annual air temperature has a trend to
554 99% rising (+ 0.146 °C/y), and also the rainfall rate shows a trend to 99% in increase (+0,277
555 mm/y). The annual average temperatures shows at least 5 oscillations of higher order and a
556 greater increase between 1910 and 1920, as calculated with Pettitt's homogeneity test (Pettitt,
557 1979); the average intensity of daily rainfall shows a steady increase, above all from the
558 1920s and caused by the decrease of rainy days (Pasquale et al., 1994; Russo et al., 2000),
559 followed by a marked decrease in the last decade. Floods in the Genoa area occur mostly in
560 the autumn, because of the meteorological predisposing factors. However, as shown by the
561 rain historical data, such flooding events occurred all through the year (Faccini et al., 2015a).



563
564
565
566

Fig. 3 - Map of the evolution of the urban area. Modified Regione Liguria, 1986 and updated with data from Regione Liguria “Edifici e Costruzioni”, Regional Map scale 1:5,000 – ed. 1990/2006.

567
568



569
570
571
572

Fig. 4 - Map of the soil consumption by altitude. Data from ISPRA 2015, developed from DTM 2007-5 m resolution Regione Liguria, 2007.

573
 574
 575
 576
 577
 578
 579
 580
 581
 582
 583
 584
 585
 586
 587
 588
 589
 590
 591
 592
 593
 594
 595
 596
 597
 598
 599
 600
 601
 602
 603
 604
 605
 606
 607

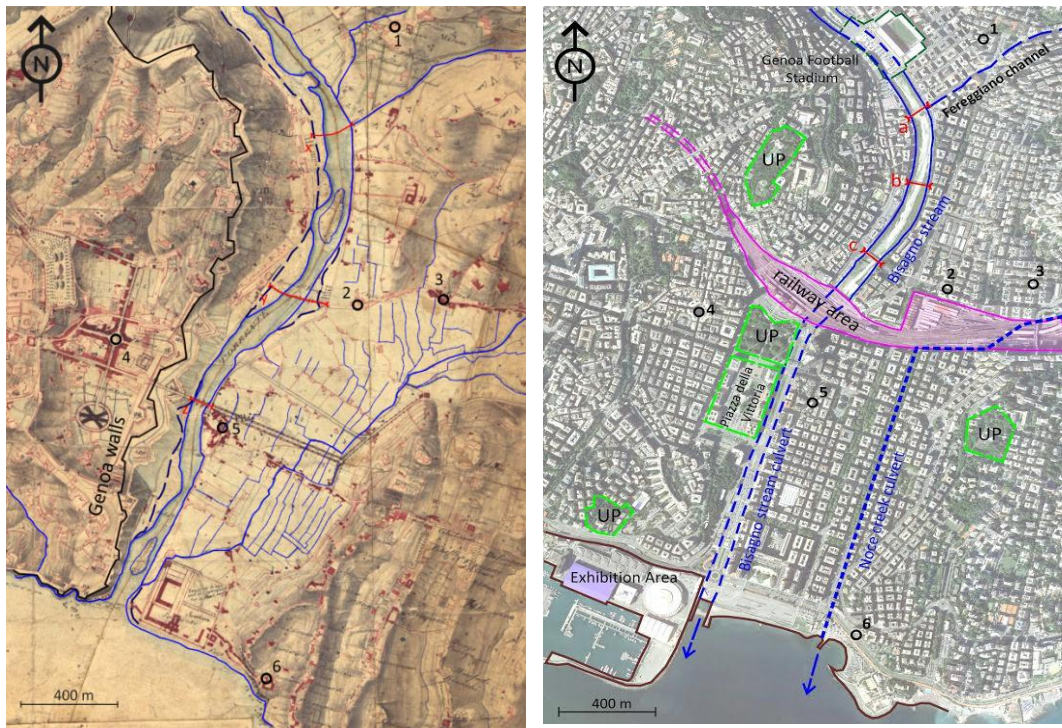
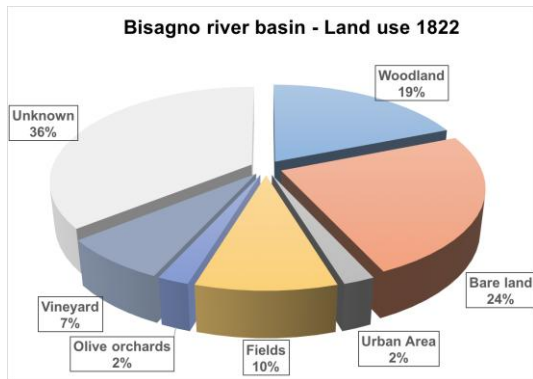
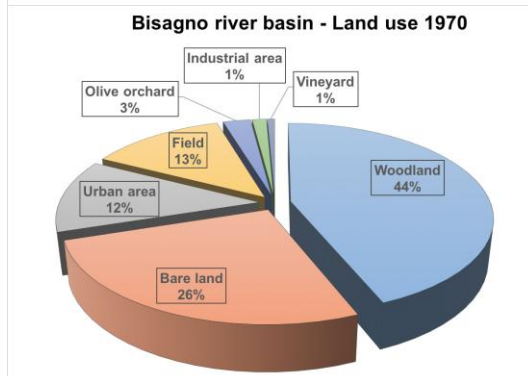


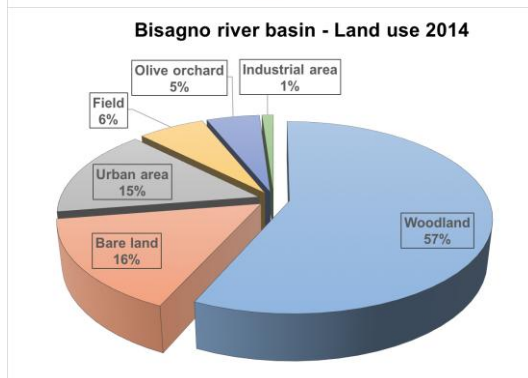
Fig. 5 - River bed changes in the final stretch from 1822 (left) to present day (right). It is possible to observe: the complete urbanisation of the alluvial plain between 1873 and 1950; the coverage of the Bisagno stream (between 1926 and 1936); the coverage of the Fereggiano stream (between 1892 and 1907); the demolition of Ponte Pila bridge for the coverage of the Bisagno and the narrowing of the river bed (from 120 to 50 metres); the narrowing of the river bed at Sant'Agata bridge (from 280 to 70 metres). 1: Convent of the Nuns of Marassi, 2: Convent of S. Agata, 3: Monastery of SS. Giacomo and Filippo, 4: Piazza Colombo, 5: Borgo Pila, Church of St. Zita, 6: Church of St. Pietro, UP: urban parks, x: Monticelli (today Serra) bridge, y: Sant'Agata bridge, z: Pila bridge, a: Serra Bridge, b: Firpo bridge, c: Sant'Agata bridge.



608



609

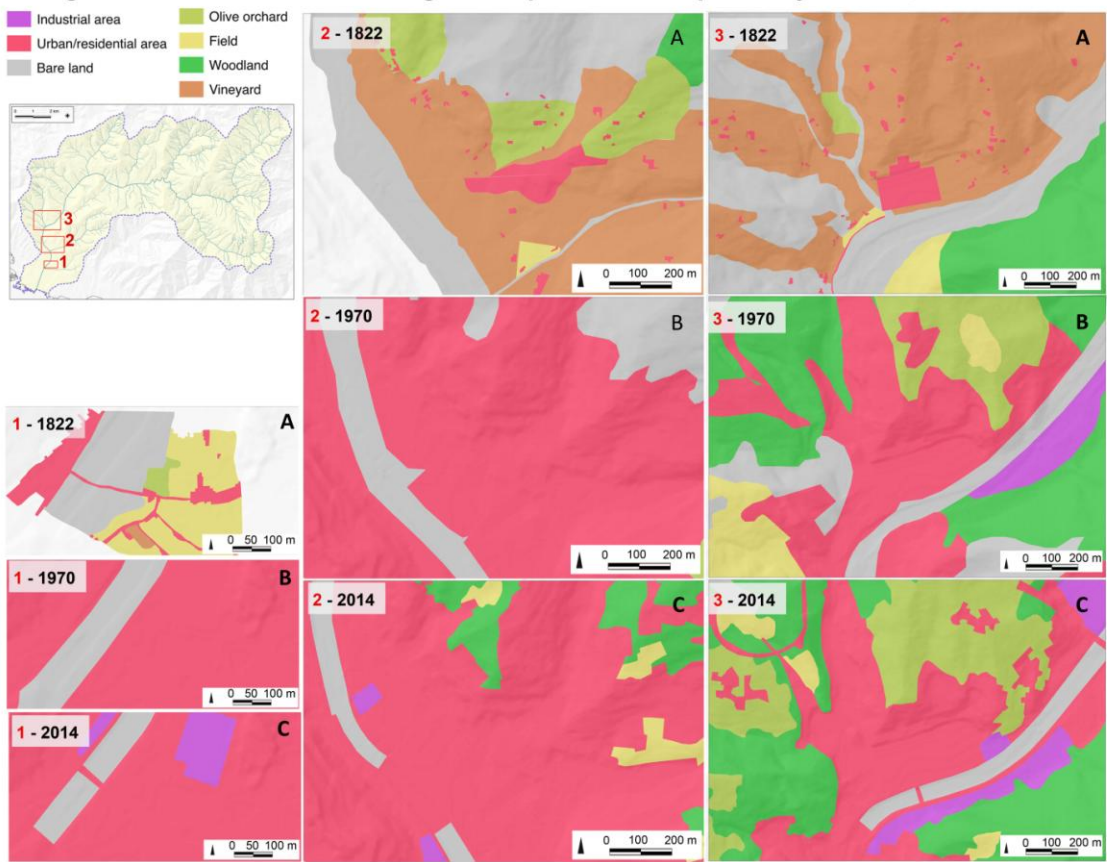


610

611

612 Fig. 6 - Land-use Bisagno catchment in 1822, 1970 and 2014, representative of the three flood events.
 613 Data elaborated from Italian Military Geographical Institute, Corpo di Stato Maggiore Sardo (1816-
 614 27), Regione Liguria (1970), Regione Liguria (2014).

Bisagno catchment land use change - Sample areas comparison year 1822, 1970 and 2014



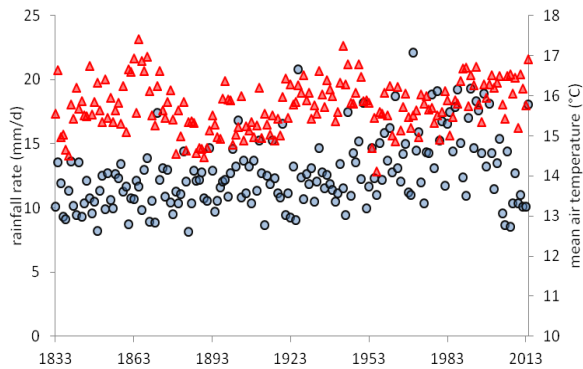
615
616
617
618

Fig. 7 - Land-use changes in 1822, 1970, 2014 in S. Agata (lower catchment, column 1), Marassi (middle-lower catchment, column 2) and Staglieno (middle catchment, column 3).

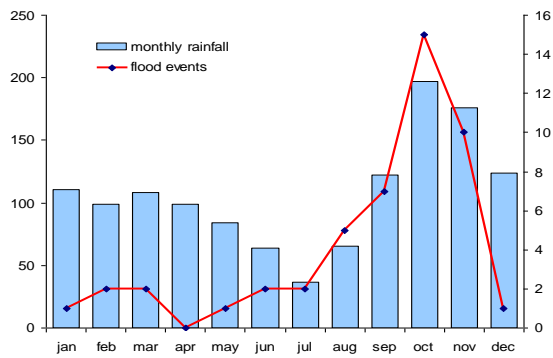


619
 620 Fig. 8: Landscape changes in the final stretch (column 1), Marassi (column 2) and Staglieno (column
 621 3). The sequence of images shows the progressive urban growth and decrease of the rural landscape
 622 associated to the building of the terminal coverage of the Bisagno. Images references: 1.A, Luigi
 623 Garibbo (Collezione Topografica del Comune di Genova); 1.B, image from www.genovavintage.it;
 624 1.C, Pietro Piana (2014); 2.A, Luigi Garibbo (Collezione Topografica del Comune di Genova); 2.B,
 625 image from Lamponi (1982); 2.C, Pietro Piana (2014); 3.A, Pasquale Domenico Cambiaso
 626 (Collezione Topografica del Comune di Genova); 3.B, image from www.amicidipontecarrega.it; 3.C
 627 Pietro Piana (2014).

628



629



630

	annual rainfall	rainfall rate	mean air temperature	rainy days
tau Kendall	-0.080	0.277	0.146	-0.431
Score	-1214	443 0.05 6	2365	-6876
Var(S)	664268	664270	664221	663988
2 sided p-value	0.111	< 0.0001	0.004	< 0.0001
trend	<i>no trend</i>	<i>positive</i>	<i>positive</i>	<i>negative</i>

631

632

633

634

635

636

Fig. 9 - historical record rainfall rate (mean rains by year / average number of rainy days by year) and mean air temperature by year at Genoa University station. Rainfall regime by month with number of flood events by month in Genoa metropolitan area from XVII century to present day (modified from Faccini et al., 2015); Non parametric Mann-Kendall test table (Mann, 1945) data from Genoa-University station, 1833-2104 modified from Faccini et al., 2015a, significance level 95%.

637 **5. Discussion and conclusion**

638

639 The three flood events examined in this research show differences and similarities. From a
640 meteorological point of view they all occurred in autumn, caused by the same atmospheric
641 conditions. Persistent precipitations with significant peaks linked to convective systems
642 generated in the Gulf of Genoa characterise these events. The cumulated rainfall can reach
643 significant values such as in 1970 (800 mm/24h), while the last flood presents lower levels of
644 precipitation but higher hourly peaks than in 1970, as already reported by [Faccini et al.,](#)
645 [2015a](#). The ground effects are similar, with the whole Bisagno alluvial plain submerged and
646 similar water heights despite the landscape changes occurred in the last 189 years. The small
647 differences in some areas are due to the levelling of the hill near Via XX Settembre, the
648 lowering of Borgo Pila and the demolition of the lower walls and in general the total
649 urbanisation of the area. The urban sprawl in the Bisagno catchment is an evident cause of the
650 increased flood risk. The wider part of the alluvial plain at St. Agata is completely built up
651 apart from the river bed which is 70 metres wide immediately before the railway bridge and
652 the final culvert of the Bisagno. The modifications of the river bed consist of the channelling
653 of the stream, the constriction of the discharge-section and the irrational final culvert which
654 made the discharge-sections totally insufficient even for floods of a return time of 20 years
655 The land use variations, the almost total urbanisation of the bottom of the valley and the
656 riverbed modifications are all factors which increase the ground effects and the vulnerability.
657 The compared analysis of maps and drawings of the Bisagno Valley has shown the land-use
658 changes of the last two centuries, documenting the progressive reduction of cultivated fields
659 and managed orchards, the expansion of wooded areas and the urban growth of the last 50

660 years. The case study of the flood of 1822 is particularly interesting and it shows the
661 importance of the use of historical documents, both written and iconographical, for the study
662 of past flood events, opening up a fruitful multidisciplinary approach which involves both
663 scientific and humanistic disciplines (Piana et al., 2012; Piana, 2015).

664 Historical land-use variations, with the total urbanisation of the alluvial plain and the sides of
665 the lower valley reduced the concentration time. On the other hand, the abandonment of the
666 countryside has contrasting effects: from one side there was an increase of woodland in the
667 upper valley with possible positive effects on the development of the stream floods
668 (Hjelmfelti, 1991). However, the abandonment of traditional practices such as river and
669 terraces management has increased sediment transport and slope instability (USDA-NRCS,
670 2000; Brancucci and Paliaga, 2006; Kang and Marston, 2006; Ward et al., 2009).

671 The annual average temperature and the rainfall rate show an increasing trend in accordance
672 with recent climate variations (IPCC, 2013). This trend starts between 1910 and 1920
673 indicating a new climatic phase (Faccini et al., 2015a). Therefore, the data supports the
674 observation that rainfall tends to concentrate in even shorter times with frequent flash floods.
675 Today, global warming and hourly rainfall intensity on a catchment with very short
676 concentration times contribute more effectively to the development of violent floods than in
677 1822 at the end of the little ice age.

678 Written and iconographical sources provide evidence of the historical frequency of floods in
679 the Bisagno Valley. Both meteorological and geomorphological factors make the occurrence
680 of floods and intense rainfall events in autumn particularly high. In addition to this, recent
681 climate change and the urbanisation have contributed to increase respectively the hazard and
682 the vulnerability; consequently, the number of short but very intense flood events has grown.

683 However, the land use variations due to the urbanisation of the area appear to have a greater
684 impact on the floods than climate change.

685 Since re-establishing the original landscape conditions or managing the short-term climate is
686 impossible, it is necessary to manage the hazard and defend goods and human lives with
687 structural and non-structural measures. In particular, the reduction of sediment transport is of
688 primary importance. The entire basin should be subject to constant hydraulic-forest
689 management with the aim to decrease erosion and the times of concentration and improve the
690 stability of the slopes. The terminal culvert of the Bisagno needs a complete renovation with
691 increased hydraulic section. In addition measures should be developed to ‘re-naturalize’ some
692 parts of the upper Bisagno and, where possible, re-manage the agrarian landscape according
693 to historical land-use information provided by drawings, archival documents and maps.
694 Moreover, any further soil consumption has to be stopped. From a meteorological and
695 hydrological point of view these sudden hazardous weather events should be faced by using
696 “now-casting” in addition to forecasting, and by monitoring in real time the formation of
697 storm cells and the hydrometrical data produced by the weather stations of the catchment.
698 From a civil protection point of view it is necessary to have detailed and diversified
699 Municipality emergency plans for the various areas subjected to flood hazard. From a civil
700 defence point of view flood warnings should be efficient and immediate, while campaigns on
701 self-protection with simulations and practical training should be carried out, improving
702 people’s resilience.

References

- 703 **References**
704
705 Agenzia Regionale per la Protezione dell'Ambiente Liguria ARPAL, 2013. Atlante climatico della
706 Liguria (in Italian). <http://www.arpal.gov.it>. Accessed 25 January 2016.
- 707 Agnoletti, M., Emanuelli, F., Maggiari, G., Preti, F., 2012. Landscape and hydrogeological risk. The
708 environmental disaster of 25 October 2011 in Cinque Terre. In: Agnoletti, M., Carandini, A.,
709 Santagata W. (Eds.), Florence 2012. Studi e Ricerche / Essays and Researches. Pontedera, Pisa,
710 Bandecchi and Vivaldi, pp. 25-46.
- 711 Anagnostopoulou, C., Tolika, K., Flocas, H., Maherias. P., 2006. Cyclones in the Mediterranean
712 region: present and future climate scenarios derived from a general circulation model (HadAM3P).
713 *Advances in Geosciences* 7, 9-14.
- 714 Apel, H., Merz, B., Annagret, H., Thielen, H., 2008. Quantification of uncertainties in flood risk
715 assessments. *International Journal of River Basin Management* 6 (2), 149-162.
- 716 Barrell, J., 2013. Edward Pugh of Ruthin 1763-1813 'A Native Artist'. Cardiff, University of Wales
717 Press.
- 718 Barrera-Escoda, A., Llasat, M.C., 2015. The role of climatic factors in evolving flood patterns in a
719 Mediterranean region (1301–2012). *Hydrology and Earth System Sciences* 19, 465-483.
- 720 Blöschl, G., Nester, T., Komma, J., Parajka, J., Perdigão, R. A. P., 2013. The June 2013 flood in the
721 Upper Danube Basin, and comparisons with the 2002, 1954 and 1899 floods. *Hydrology and Earth*
722 *System Sciences* 17, 5197-5212.
- 723 Böhm, O., Jacobeit, J., Glaser, R., Wetzel, K. F., 2014. Flood sensitivity of the Bavarian Alpine
724 Foreland since the late Middle Ages in the context in the context of internal and external climate
725 forcing factors. *Hydrology and Earth System Sciences* 19, 4721-4734.
- 726 Bossolasco, M., Cicconi, G., Dagnino, I., Flocchini, G., 1971. Le cause meteorologiche dell'alluvione
727 su Genova del 7-8 ottobre 1970. *Geofisica e Meteorologia* 20, 122-132.
- 728 Boudou, M., Danière, B., Lang, M., 2016. Assessing changes in urban flood vulnerability through
729 mapping land use from historical information. *Hydrology and Earth System Sciences* 20, 161-173.
- 730 Brancucci, G., Paliaga, G., 2005. Geomorphic characterization of the main drainage basins of
731 maritime Liguria (Italy) – preliminary results. *Geografia Fisica e Dinamica Quaternaria*, suppl. VII,
732 59–67.

733 Brancucci, G., Paliaga, G., 2006. The hazard assessment in a terraced landscape: the Liguria (Italy)
734 case study in Interreg III Alpter project. “Geohazards – Technical, Economical and Social Risk
735 Evaluation”, Barkely Electronics Press.

736 Byron, Lord G. G., 1980. Byron’s letters and journals vol. 10 (1822-1823). Marchand, L. A. (Ed.)
737 Cambridge, Cambridge University Press.

738 Cati, L., 1971. L’evento alluvionale del 7-8 ottobre 1970 sui bacini dei torrenti Leiro, Polcevera e
739 Bisagno. In: Annali Idrologici, Istituto Poligrafico dello Stato, Roma, parte 2.

740 Cevasco, R., Moreno, D., 2014. Pendici liguri: riscoprire le relazioni tra suoli e copertura vegetale. In:
741 Cesaretti, P., Ferlinghetti, R. (Eds.), Uomini e ambienti. Dalla storia al futuro. UBI Banca, Bolis
742 Edizioni, pp. 46-67.

743 Cevasco, A., Sacchini, A., Robbiano, A., Vincenzi, E., 2010. Evaluation of rainfall thresholds for
744 triggering shallow landslides on the Genoa Municipality area (Italy): the case study of the Bisagno
745 Valley. Italian Journal of Engineering Geology and Environment 1, 35-50.

746 Chin, A., 2006. Urban transformation of river landscapes in a global contest. *Geomorphology* 79, 460-
747 487.

748 Committee on Increasing National Resilience to Hazards and Disasters, Committee on Science,
749 Engineering, and Public Policy, and The National Academies, 2012. Disaster Resilience: A
750 National Imperative. National Academies Press.

751 Città Metropolitana di Genova, 2015. Basin Master Plan of the Bisagno stream catchment, technical
752 report (in Italian). [http:// cartogis. provincia. genova.it](http://cartogis.provincia.genova.it). Accessed 19 January 2016.

753 Delile, H., Schmitt, L., Jacob-Rousseau, N., Grospretre, L., Privolt, G., Preusser, F., 2016. Headwater
754 valley response to climate and land-use changes during the Little Ice Age in the Massif Central
755 (Yzeron basin, France). *Geomorphology* 257, 179-197.

756 De Roo, A., Odijk, M., Schmuck, G., Koster, E., Lucieer, A., 2001. Assessing the effects of land use
757 changes on floods in the meuse and oder catchment. *Physics and Chemistry of the Earth, Part B:*
758 *Hydrology, Oceans and Atmosphere* 26 (7–8), 593–599.

759 Elleder, L., 2015. Historical changes in frequency of extreme floods in Prague. *Hydrol. Earth Syst.*
760 *Sci.* 19, 4307-4315.

761 European Environmental Agency EEA, 2006. Urban sprawl in Europe. The ignored challenge. EEA
762 Report, 10.

763 Faccini, F., Brandolini, P., Robbiano, A., Perasso, L., Sola, A., 2005. Instability, precipitation
764 phenomena and land planning: the flood of 2002 in lower Lavagna valley (Eastern Liguria, Italy).
765 *Geografia Fisica e Dinamica Quaternaria*, Suppl. VII, 145-153.

766 Faccini, F., Luino F., Sacchini A., Turconi L., De Graaf J., 2015a. Geohydrological hazards and urban
767 development in the Mediterranean area: an example from Genoa (Liguria,Italy). *Natural hazards*
768 *and Earth Syst. Sci.* 15, 2631- 2652.

769 Faccini, F., Luino, F., Sacchini, A., Turconi, L., 2015b. The 4th October 2010 flash flood event in
770 Genoa Sestri Ponente (Liguria, Italy). *Disaster Advanced* 8 (8), 1-14.

771 Faccini, F., Robbiano, A., Sacchini, A., 2012. Geomorphic hazard and intense rainfall: the case study
772 of the Recco Stream Catchment (Eastern Liguria, Italy), *Natural Hazards and Earth System*
773 *Sciences* 12, 893-903.

774 Faccini, F., Vassalli, G., 2008. Geological hazard and abandoned waste management: the case of
775 Genoa Municipality (Liguria, Italy), *GEAM* 124, 55-62.

776 Ferrari, M., Belicchi, M., Carlini, D., Magone, U., Venturini, S., Marchi, A., Galli, A., Gatti, U.,
777 Rinasco, S., 2014. The Bisagno river diversion. *River flow 1757-1765*.

778 Fryirs, K., Lisenby, P., Croke, J., 2015. Morphological and historical resilience to catastrophic
779 flooding: the case of Lockyer Creek, SE Queensland, Australia. *Geomorphology* 241, 55-71.

780 Gaynor, A., McLean, I., 2008. *Landscape Histories, Mapping Environmental and Ecological Change*
781 *Through the Landscape Art of the Swan River Region of Western Australia.* *Environment and*
782 *History* 14, 187-204.

783 Garcia-Ruiz, J.M., Regu, D., Alvera, B., Lana-Renault, N., Serrano-Muela, P., Nadal-Romero, E.,
784 Navas, A., Latron, J., Martí-Bono, C., Arnaez, J., 2008. Flood generation and sediment transport in
785 experimental catchments affected by land use changes in the central Pyrenees. *Journal of*
786 *Hydrology* 356, 245– 260.

787 Grams, C. M., Binder, H., Pfahl, S., Piaget, N., Wernli, H., 2014. Atmospheric processes triggering the
788 Central European floods in June 2013. *Nat. Hazards Earth Syst. Sci.* 14, 1691-1702.

789 Guzzetti, F., Tonelli, G., 2004. Information system on hydrological and geomorphological
790 catastrophes in Italy (SICI): a tool for managing landslide and flood hazards. *Nat. Hazards Earth*
791 *Syst. Sci.* 4, 213-232.

792 Hall, J., Arheimer, B., Borga, M., Brázdil, R., Claps, P., Kiss A., Kjeldsen, T. R., Kriauciuniene, J.,
793 Kundzewicz, Z. W., Lang, M., Llasat, M. C., Macdonald, N., McIntyre, N., Mediero, L., Merz, B.,
794 Merz, R., Molnar, P., Montanari, A., Neuhold, C., Parajka, J., Perdigão, R. A. P., Plavcová, L.,
795 Rogger, M., Salinas, J. L., Sauquet, E., Schär, C., Szolgay, J., Viglione, A., Blöschl, G., 2014.
796 Understanding Flood Regime Changes in Europe: A state of the art assessment. *Hydrol. Earth Syst.*
797 *Sci.* 18, 2735-277.

798 Hally, A., Caumont, O., Garrote, L., Richard, E., Delogu, F., Flori, E., Reborá, N., Parody, A.,
799 Mihalovic, A., Ivkovic, M., Van Verseweld, W., Nuisse, O., Ducrocq, V., D'Agostino, D., Galini,
800 A., Danovaro, E., Clendis, A., 2015. Hydrometeorological multimodel ensemble simulation of the
801 4-11-2011 flash flood event in Genoa, Italy in the framework of the DHRIM project. *Natural*
802 *Hazards and Earth System Sciences* 15, 537-565.

803 Hjelmfelti, A.T., 1991. Investigation of the Curve Number Procedure. *Journal of Hydraulic*
804 *Engineering*, ASCE 117(6), 725-737.

805 Inglese, I., Fantoli, G., Canepa, R., 1909. Relazione sulla portata massima del Torrente Bisagno, sulla
806 condotta urbana dello stesso. Genova.

807 Intergovernmental Panel on Climate Change IPCC, 2013. *Climate Change 2013: The Physical Science*
808 *Basis. Contribution of Working Group I to the Fifth Assessment Report of the Intergovernmental*
809 *Panel on Climate Change [Stocker, T.F., D. Qin, G.-K. Plattner, M. Tignor, S.K. Allen, J.*
810 *Boschung, A. Nauels, Y. Xia, V. Bex, P.M. Midgley (Eds)]. Cambridge University Press,*
811 *Cambridge, United Kingdom and New York, NY, USA.*

812 ISPRA (Environmental Protection Italian Institute), 2015. *Il consumo di suolo in Italia - Edizione*
813 *2015 (Eds. M. Munafò, F. Assennato, L. Congedo, T. Luti, I. Marinosci, G. Monti, N. Riitano, L.*
814 *Sallustio, A. Strollo, I. Tombolini e M. Marchetti). Rapporti 218/2015.*

815 ISTAT (Italian Institute of Statistic), 2011. *14° Censimento Generale della Popolazione e delle*
816 *Abitazioni.*

817 Jansà, A., Alpert, P., Arbogast, P., Buzzi, A., Ivancan-Picek, B., Kotroni, V., Llasat, M.C., Ramis, C.,
818 Richard, E., Romero, R., Speranza, A., 2014. MEDEX: a general overview. *Natural Hazards and*
819 *Earth System Sciences* 14, 1965-1984.

820 Kang, R.S., Marston, R.A., 2006. Geomorphic effects of rural to urban land-use conversion on three
821 streams in the Central Redbed Flows of Oklahoma. *Geomorphology* 79, 488-506.

822 Lamponi, M., 1982. *Paesi e gente di Val Bisagno.* Genova.

823 Latocha, A., 2009. Land-use changes and longer-term human–environment interactions in a mountain
824 region (Sudetes Mountains, Poland). *Natural versus human-induced effects. Geomorphology*
825 108(1), 48-57.

826 Likai, Z, Jijun, M., 2010. Study on rainfall variations in the middle part of Inner Mongolia, China
827 during the past 43 years. *Environmental Earth Sciences* 60, 8, 1661-1671.

828 Llasat, M. C., Ghabeli, J., Turco, M.P., 2014. Flash flood evolution in North Western Mediterranean.
829 *Atmospheric Research* 149, 230-243.

830 Luino, F., 2005. Sequence of instability processes triggered by heavy rainfall in the northern Italy.
831 *Geomorphology* 66, 13-39.

832 Marcenaro, G., Repetto, F., 1970. *Dizionario delle Chiese di Genova*. Genova.

833 Mann, H.B., 1945. Non parametric tests against trend. *Econometrica* 13, 245-259.

834 Mann, M.E., 2002. Little ice age. Volume 1, *The Earth system: physical and chemical dimensions of*
835 *global environmental change*, Edited by Dr Michael C MacCracken and Dr John S Perry in
836 *Encyclopedia of Global Environmental Change (ISBN 0-471-97796-9) John Wiley & Sons, Ltd,*
837 *Chichester, pp. 504–509.*

838 Marchi, L., Cavalli, M., Amponsah, W., Borga, M., Crema, S., 2016. Upper limits of flash flood
839 stream power in Europe. *Geomorphology*. <http://dx.doi.org/10.1016/j.geomorph.2015.11.005>.

840 Montanari, A., Young, G., Savenije, H.H.G., Hughes, D., Wagener, T., Ren, L.L., Koutsoyiannis, D.,
841 Cudennec, C., Toth, E., Grimaldi, S., Blöschl, G., Sivapalan, M., Beven, K., Gupta, H., Hipsey,
842 M., Schaeffli, B., Arheimer, B., Boegh, E., Schymanski, S.J., Di Baldassarre, G., Yu, B., Hubert, P.,
843 Huang, Y., Schumann, A., Post, D., Srinivasan, V., Harman, C., Thompson, S., Rogger, M.,
844 Viglione, A., McMillan, H., Characklis, G., Pang, Z., Belyaev, V., 2013. *Panta Rhei - Everything*
845 *Flows: Change in hydrology and society—The IAHS Scientific Decade 2013–2022, Hydrological*
846 *Sciences Journal* 58 (6), 1256–1275.

847 Moreno, D., Cevasco, R., 2008. *La cartografia topografica: una fonte per la storia delle risorse*
848 *ambientali della montagna ligure. L'Universo* 88 (4), 444-478.

849 Paliaga, G., 2004. *Evoluzione morfologica dei principali bacini imbriferi del versante tirrenico ligure.*
850 *Ph.D. Thesis, University of Genoa, Italy.*

851 Paliaga, G., 2015. Erosion triangular facets as markers in an open dissipative system. *Pure and applied*
852 *Geophysics* 172, 1985-1997.

853 Pasquale, V., Russo, G., Sacchini, A., Verdoya, M., 1994. Precipitation rate as a signal of recent
854 climatic variations. *Annalen der Meteorologie* 30, 278–281.

855 Pettitt, N. A., 1979. A non-parametric approach to the change point problem. *Applied Statistics* 28,
856 126-135.

857 Piana, P., Balzaretto, R., Moreno, D., Watkins, C., 2012. Topographical art and landscape history:
858 Elizabeth Fanshawe in early nineteenth-century Liguria. *Landscape History* 33 (2), 65-82.

859 Piana, P., 2015. Topographical art and landscape history in Central-Eastern Liguria (c. 1770-1840).
860 PhD Thesis, University of Nottingham.

861 Plate, E.J., 2002. Flood risk and flood management. *Journal of Hydrology* 267(1-2), 2-11.

862 Rhoads, B.L., Lewis, Q.W, Andresen, W., 2015. Historical changes in channel network extent and
863 channel planform in an intensively managed landscape. *Geomorphology* 252, 17–31.

864 Rosso, R., Rulli, M.C., 2002. An integrated simulation method for flash-flood risk assessment: 2.
865 Effects of changes in land-use under a historical perspective. *Hydrology and Earth System Sciences*
866 6(3), 285-294.

867 Russo, G., Sacchini, A., 1994. Brief survey on recurrences of extreme rainfalls in Genoa, Italy.
868 *Idojaras* 98, 251-260.

869 Russo, G., Eva, C., Palau, C., Caneva, A., Sacchini, A., 2000. The recent increase in the precipitation
870 rate, as seen in an ultra-centennial series of precipitation. *Il Nuovo Cimento* 23, 39-51.

871 Sacchini, A., Ferraris, F., Faccini, F., Firpo, M., 2012. Environmental climatic maps of Liguria.
872 *Journal of Maps* 8 (3), 199-207.

873 Saéz de Càmara, E., Gangoiti, G., Alonso, L., Navazo, M., Gòmez, N., Iza, J., García, J. A., Ilardía, J.
874 L., Millàn, M. M., 2011. Water vapour accumulation mechanisms in the Western Mediterranean
875 Basin and the development of European extreme rain-falls. *Tethys, Journal of Weather and Climate*
876 *of the Western Mediterranean* 8, 101-117.

877 Shelley, M. 1844. *Rambles in Germany and Italy, in 1840, 1842, and 1843*, vol. 1, Edwar Moxton,
878 London.

879 Silvestro, F., Gabellani, S., Giannoni, F., Parodi, A., Rebora, N., Rudari, R., Siccardi, F., 2012. A
880 hydrological analysis of the 4 November 2011 event in Genoa. *Natural Hazards and Earth System*
881 *Sciences* 12 (9), 2743-2752.

882 Silvestro, F., Rebora, N., Giannoni, F., Cavallo, A., Ferraris, L., 2015. The flash flood of the Bisagno
883 Creek on 9th October 2014: An “unfortunate” combination of spatial and temporal scales. *Journal*
884 *of Hydrology*, <http://dx.doi.org/10.1016/j.jhydrol.2015.08.004>.

885 Terranova, O. G., Cariano, S. L., 2014. Rainstorms able to induce flash floods in a Mediterranean
886 climate region (Calabria, Southern Italy). *Natural Hazards and Earth System Sciences* 14, 2423-
887 2434.

888 Tung-Chiung, C., Zhou-Yin, W., Yue-Hone, C., 2010. Hazard assessment model for debris flow
889 prediction. *Environmental Earth Sciences* 60 (8), 1619-1630.

890 USA National Weather Service, Weather Forecast Office, 2008. Definition of flood and flash flood.
891 available at <http://www.srh.noaa.gov/mrx/hydro/flooddef.php>

892 US Department of Agriculture, National resources conservation service, 2000. *National Engineering*
893 *Handbook* part 530, 12-1, 12-8.

894 Ward, P.J., Van Balen, R.T., Verstraeten, G., Renssen, H., Vandenberghe, J., 2009. The impact of
895 land-use and climate change on Late Holocene and future suspended sediment yield of the Meuse
896 catchment. *Geomorphology* 103, 389-400.